

REELS



SAR MAKINA



We have kept our quality on the highest level possible and have advanced our technology along with time and novelty.

Quality Certificates

Certificate

Standard: **ISO 9001:2015**
Certificate Register No.: 01 104 1018891

Certificate Holder: **SAR BAKIRA SAKINTI VE TIGMET A.Ş.**
OSMANLIĞI İNŞAATLARI İÇİN İNŞİYE
01050 KÜLTÜRÜ
Turkey

Scope: **ENGINEERING, DESIGN AND MANUFACTURE OF SPECIAL MACHINERY AND EQUIPMENT UPON ORDER AND CONTRACTING MACHINERY AND EQUIPMENT FOR NON-FERROUS METAL AND CABLE INDUSTRY; SPIN, REEL, S AND DRAWING WIRE DRAWING, WINDING/MANUFACTURE OF WIRE RAYON/SPINNING AND PERFORMING FLUORE, MOTOR DRIVEN FLUORE, WIRE SPOOLING AND REWINDING MACHINES, ELECTRIC, TIE, TW PLATING LINE, STRIP SAND TRIP, COIL WIRE FILTRATION SYSTEM, AUTOMATIC WINDING WIRE, BUNCHING MACHINES, PAPER INSULATED FLAT AND ROUND COPPER/ALUMINIUM WIRE, BRAST TREATMENT MACHINES, FLEXIBLE AND SOLID COPPER/ALUMINIUM BUS BARS**
Proof has been furnished by means of an audit that the requirements of ISO 9001:2015 are met.

Validity: **The certificate is valid from 2021-01-27 until 2023-11-18. First certification 2015.**

2021-01-28

www.tuv.com

IAF

TÜVRheinland®
Precisely Right.

Certificate

Standard: **ISO 14001:2015**
Certificate Register No.: 01 104 1018891

Certificate Holder: **SAR BAKIRA SAKINTI VE TIGMET A.Ş.**
OSMANLIĞI İNŞAATLARI İÇİN İNŞİYE
01050 KÜLTÜRÜ
Turkey

Scope: **ENGINEERING, DESIGN AND MANUFACTURE OF SPECIAL MACHINERY AND EQUIPMENT UPON ORDER AND CONTRACTING MACHINERY AND EQUIPMENT FOR NON-FERROUS METAL AND CABLE INDUSTRY; SPIN, REEL, S AND DRAWING WIRE DRAWING MACHINES/MOTOR DRIVEN FILTRATION SYSTEMS, FLUORE, MOTOR DRIVEN FLUORE, WIRE SPOOLING AND REWINDING MACHINES, ELECTRIC, TIE, TW PLATING LINE, STRIP SAND TRIP, COIL WIRE FILTRATION SYSTEM, AUTOMATIC WINDING WIRE, BUNCHING MACHINES, PAPER INSULATED FLAT AND ROUND COPPER/ALUMINIUM WIRE, BRAST TREATMENT MACHINES, FLEXIBLE AND SOLID COPPER/ALUMINIUM BUS BARS**
Proof has been furnished by means of an audit that the requirements of ISO 14001:2015 are met.

Validity: **The certificate is valid from 2021-01-27 until 2023-11-18. First certification 2015.**

2021-01-28

www.tuv.com

IAF

TÜVRheinland®
Precisely Right.

Certificate

Standard: **ISO 45001:2018**
Certificate Register No.: 01 113 1018891

Certificate Holder: **SAR BAKIRA SAKINTI VE TIGMET A.Ş.**
OSMANLIĞI İNŞAATLARI İÇİN İNŞİYE
01050 KÜLTÜRÜ
Turkey

Scope: **ENGINEERING, DESIGN AND MANUFACTURE OF SPECIAL MACHINERY AND EQUIPMENT UPON ORDER AND CONTRACTING MACHINERY AND EQUIPMENT FOR NON-FERROUS METAL AND CABLE INDUSTRY; SPIN, REEL, S AND DRAWING WIRE DRAWING MACHINES/MOTOR DRIVEN FILTRATION SYSTEMS, FLUORE, MOTOR DRIVEN FLUORE, WIRE SPOOLING AND REWINDING MACHINES, ELECTRIC, TIE, TW PLATING LINE, STRIP SAND TRIP, COIL WIRE FILTRATION SYSTEM, AUTOMATIC WINDING WIRE, BUNCHING MACHINES, PAPER INSULATED FLAT AND ROUND COPPER/ALUMINIUM WIRE, BRAST TREATMENT MACHINES, FLEXIBLE AND SOLID COPPER/ALUMINIUM BUS BARS**
Proof has been furnished by means of an audit that the requirements of ISO 45001:2018 are met.

Validity: **The certificate is valid from 2021-01-27 until 2023-11-18. First certification 2015.**

2021-01-28

www.tuv.com

IAF

TÜVRheinland®
Precisely Right.



About us

Sar Makina Sanayi ve Ticaret A.Ş. was established in 1991 by SARKUYSAN Elektrolitik Bakır Sanayi ve Ticaret A.Ş. The company is not only the leader of copper wire manufacturing in Turkey, but also one of the best known manufacturers worldwide.

The Plant is located in Gebze with a total floor space of 13,000 m² and site area of 16,000 m².

SAR MAKİNA is an engineering, manufacturing and contracting company.

SAR MAKİNA is a successful leading company both in domestic and international markets, for designing and manufacturing of machinery, serving to electromechanical industry , on turn-key basis with environmental protection projects especially prevailing in wire and cable industry.

SAR MAKİNA Management is formed by experienced professionals and engineers with high standard expertise in copper and non ferrous metal industry, machinery and electric.



SARMAKİNA

SANAYİ VE TİCARET A.Ş.

Osmangazi Mh. Sanayi Cd. Kanuni Sk. No:12 P.K. 41700 Darıca - Kocaeli, TR

Tel. 0 262 653 90 82 **Fax.** 0 262 653 90 89

marketing@sarmakina.com - www.sarmakina.com



mission

Our target is to produce such high quality, competitive products and solutions, in time by using our resources effectively to gain customer satisfaction and loyalty



vision

Our vision is providing quality and productivity growth by the method of total quality management and carrying our leadership from the domestic market to the worldwide markets





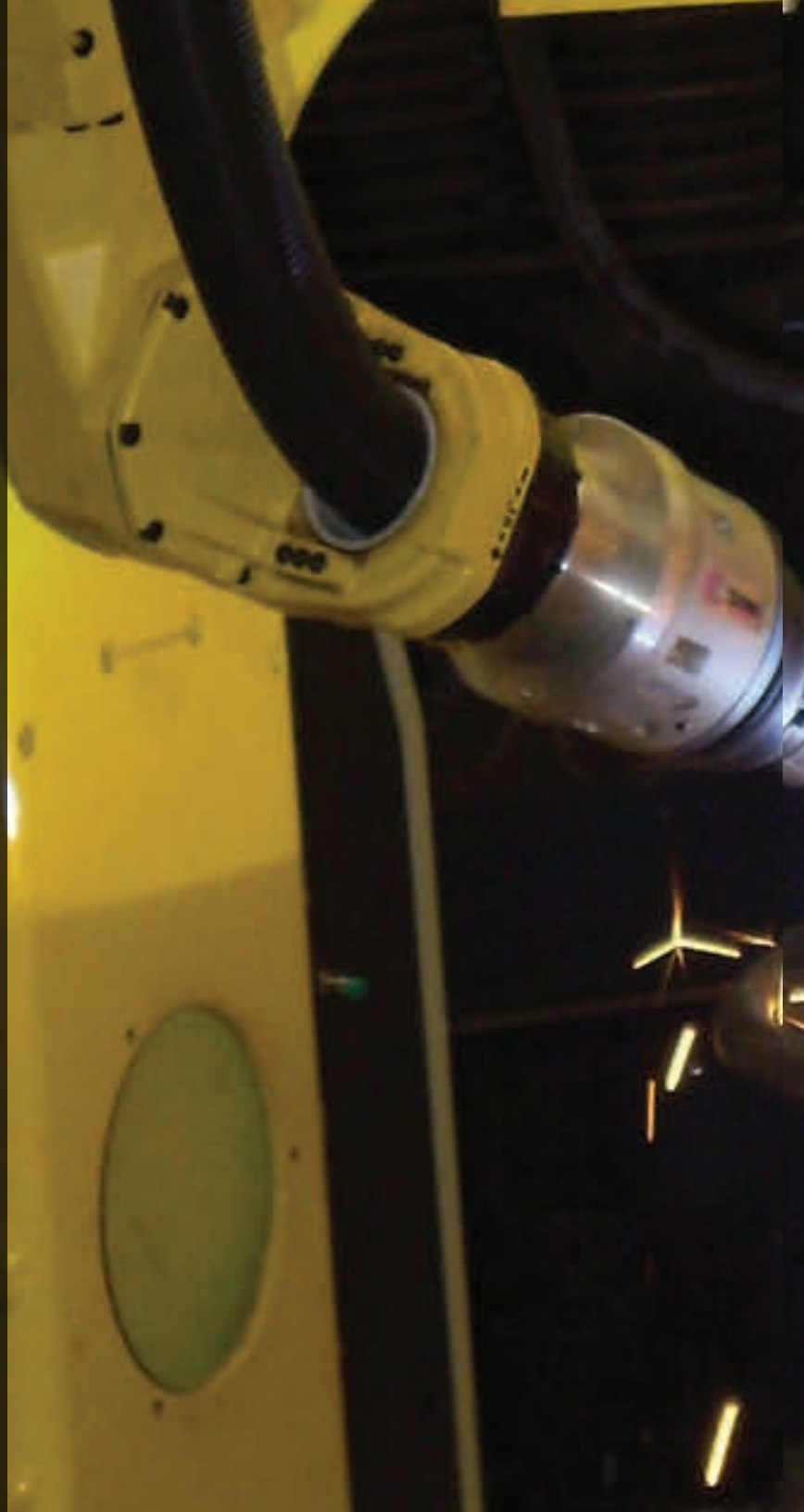
LIFTING



quality policy

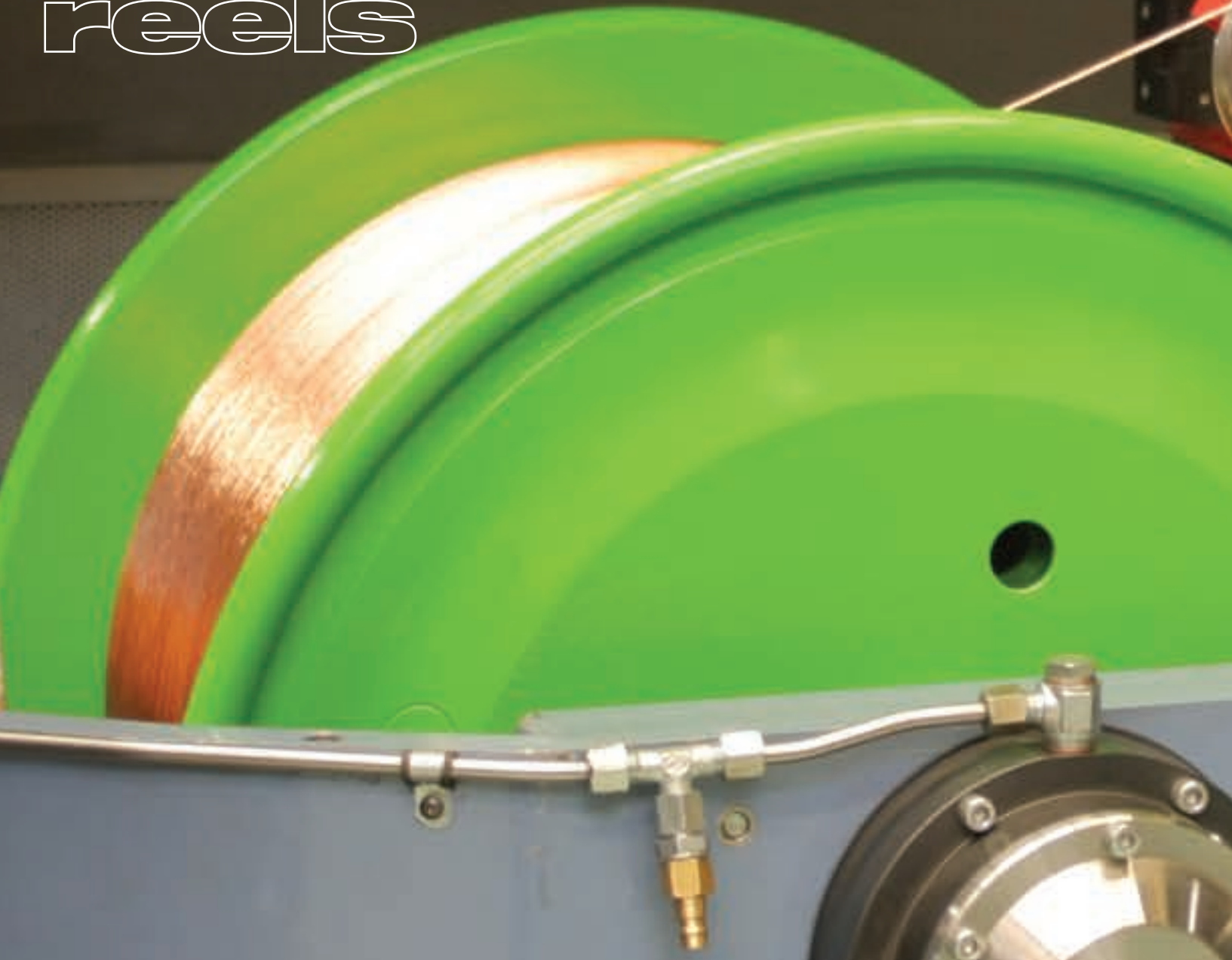
Quality Policy of SARMAKINA is to produce quality goods, which meet the needs and expectations of our customers. Effective implementation of Quality Assurance System enables that the products of are produced in compliance with customer satisfaction.

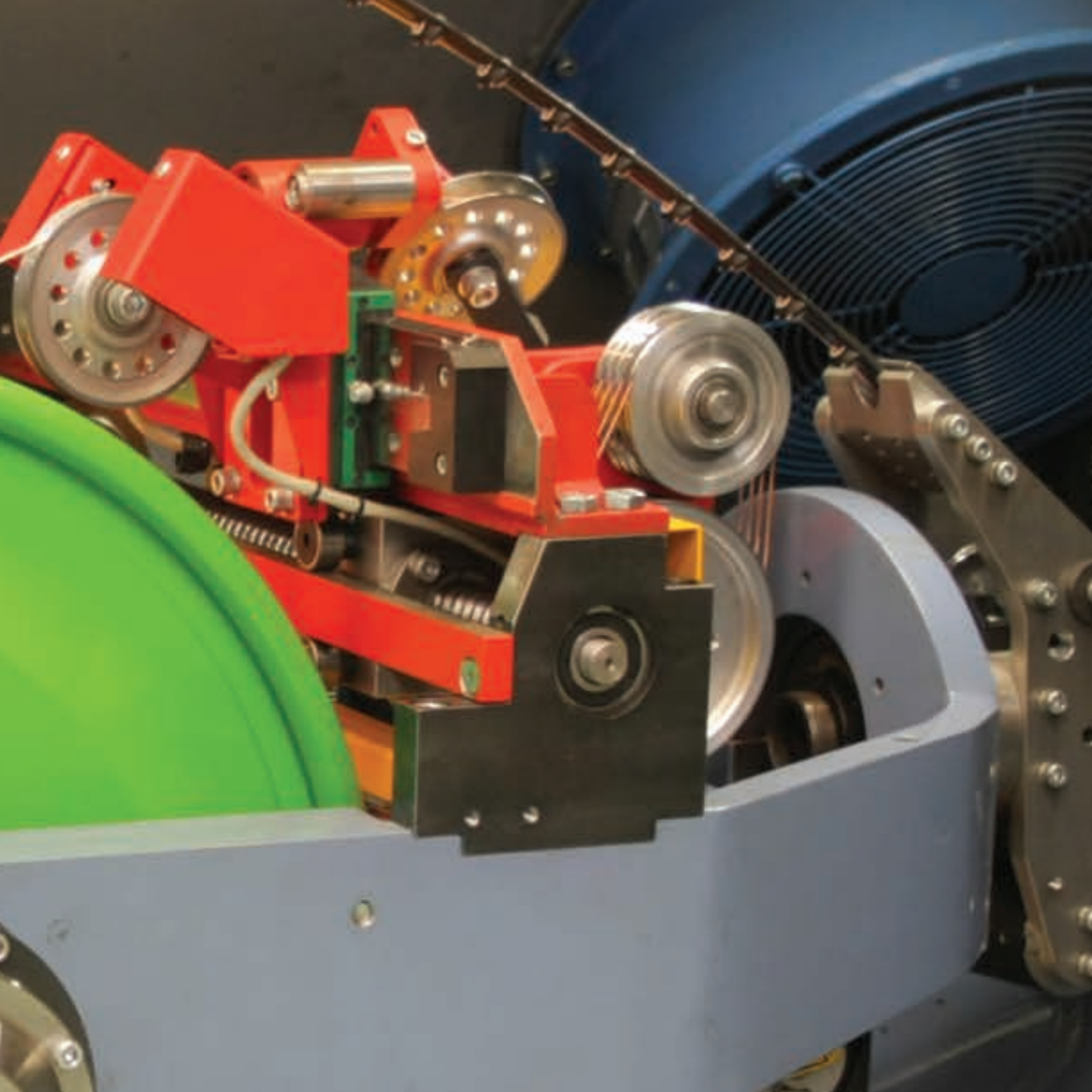
SARMAKINA, is certified with ISO 9001:2015 Quality Management, ISO 14001:205 Enviromental Management and ISO 45001:2018 Occapational Health and Safety





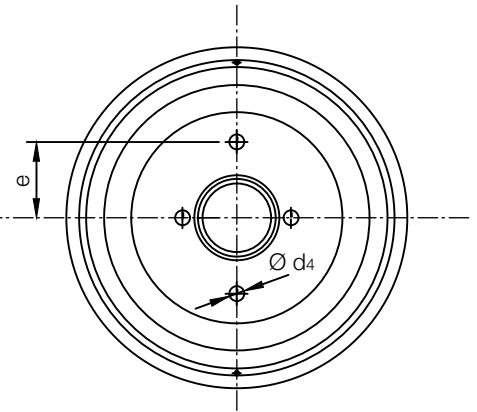
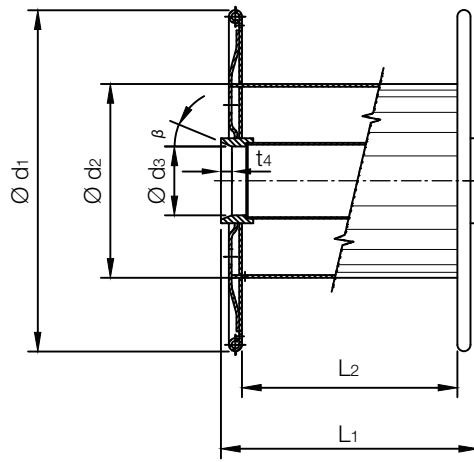
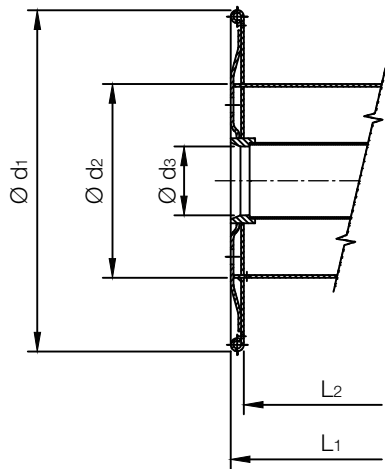
process reels



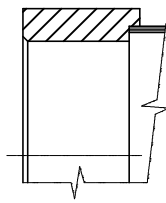


FORM A

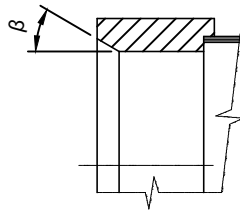
FORM B



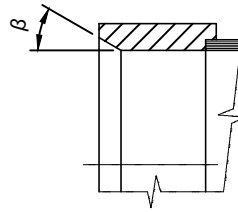
Op.1



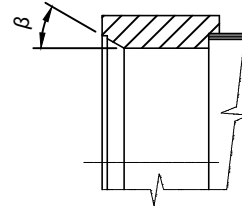
Op.2



Op.3



Op.4





SIZE RANGE

Ref. DIN 46397

Ref. Customers' : Special requirements

APPLICATION

For all kinds of wire / cable machines such as wire drawing, bunching, stranding, rewinding, extrusion lines etc.

Also suitable for the shipping purposes

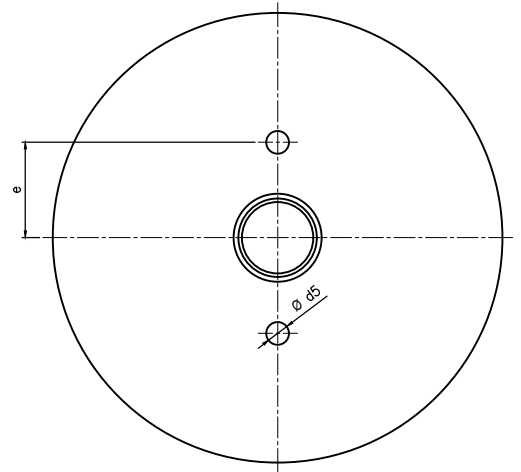
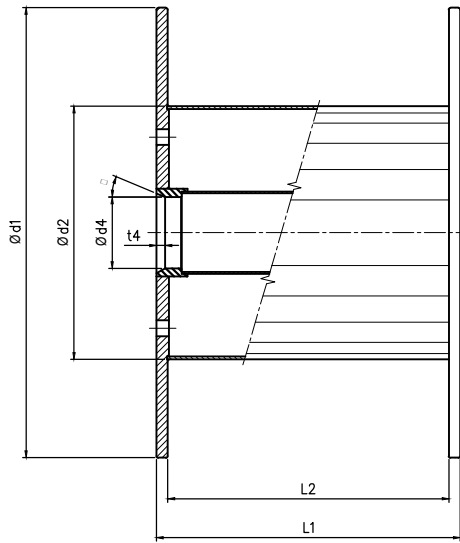
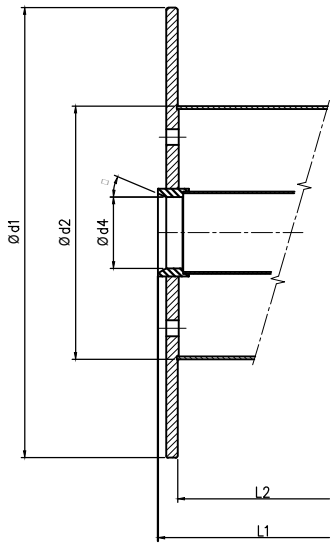
TECHNICAL PROPERTIES

Manufactured from high quality steel plates and tubes Welded MIG/MAG process Dynamically balanced according to ISO 1940-G40 for line speed between 5 m/sec - 50 m/sec

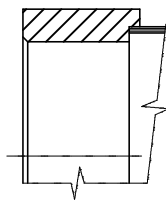
OPTIONS

Special design to meet customers' request Finish painting acc. to customer request

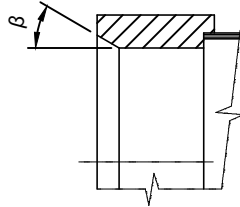




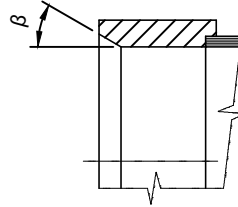
Op.1



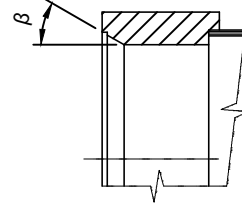
Op.2



Op.3



Op.4





SIZE RANGE

Ref. DIN 46397

Ref. Customers' : Special requirements

APPLICATION

For all kind of wire / cable machines such as wire drawing, bunching, stranding, rewinding, extrusion lines etc. Also suitable for the shipping purposes

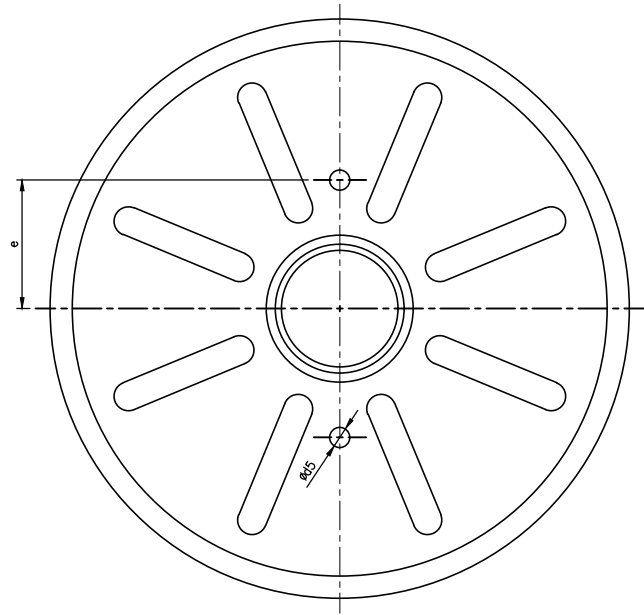
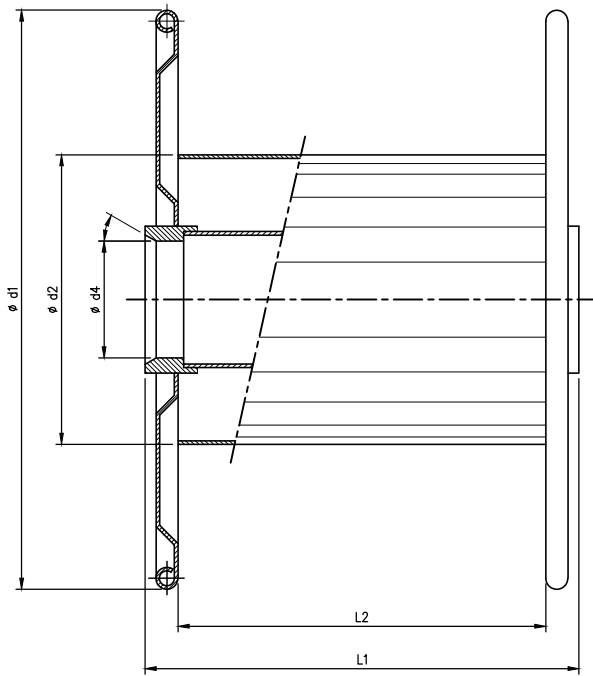
TECHNICAL PROPERTIES

Manufactured from high quality steel plates and tubes Welded by MIG/MAG process Dynamically balanced according to ISO 1940-G40 for line speed up to 50m/sec

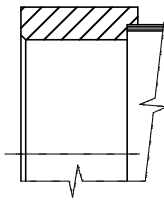
OPTIONS

Special design to meet customers' request Dynamically balanced for line speed up to 50m/sec
Finish painting acc. to customer request

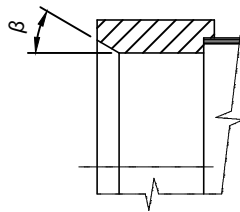




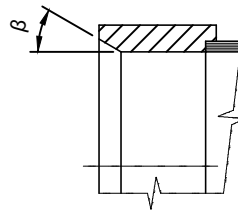
Op.1



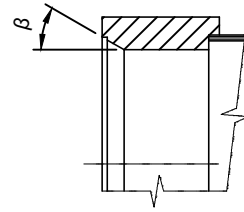
Op.2



Op.3



Op.4





SIZE RANGE

Ref. DIN 46395

Ref. Customers' : Special requirements

APPLICATION

For all kind of wire / cable machines such as wire drawing, bunching, stranding, rewinding, extrusion lines etc. Also suitable for the shipping purposes

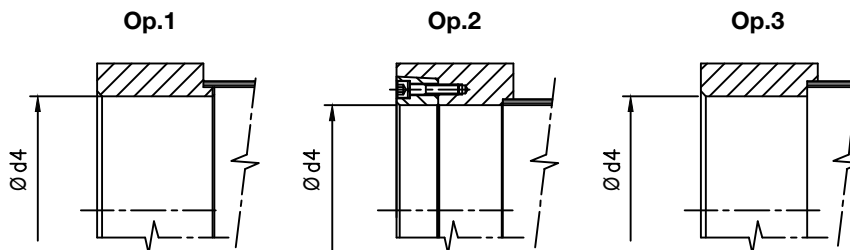
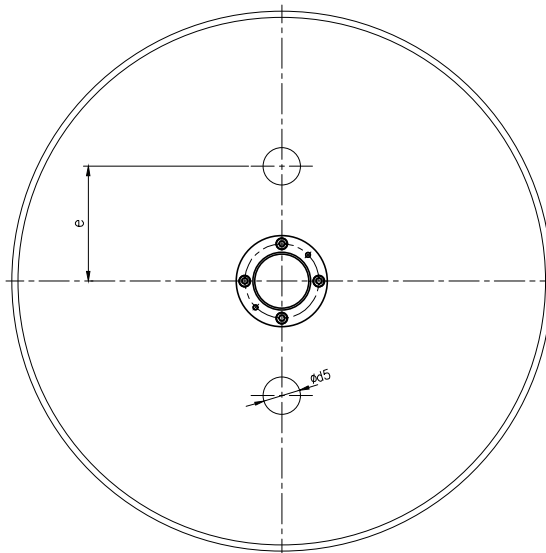
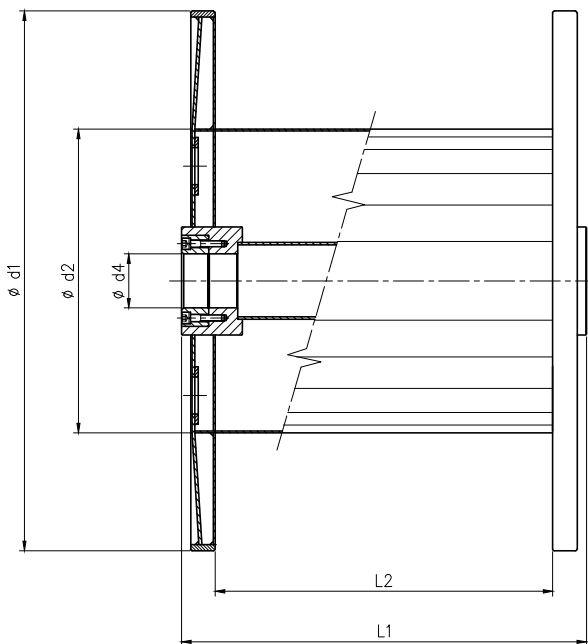
TECHNICAL PROPERTIES

Manufactured from high quality steel plates and tubes Welded by MIG/MAG process

OPTIONS

Special design to meet customers' request Dynamically balanced to ISO 1940-G40 for line speed up to 25m/sec Reinforcement on flange surfaces by ribs Flat sided flange without embossing Flanges with cable access slots Finish painting acc. to customer request







SIZE RANGE

Ref. DIN 46397

Ref. Customers' : Special requirements

APPLICATION

For all kind of wire / cable machines such as wire drawing, bunching, stranding, rewinding, extrusion lines etc. Also suitable for the shipping purposes

TECHNICAL PROPERTIES

Manufactured from high quality steel plates and tubes Welded by MIG/MAG process Dynamically balanced according to ISO 1940-G40 for line speed up to 40m/sec

OPTIONS

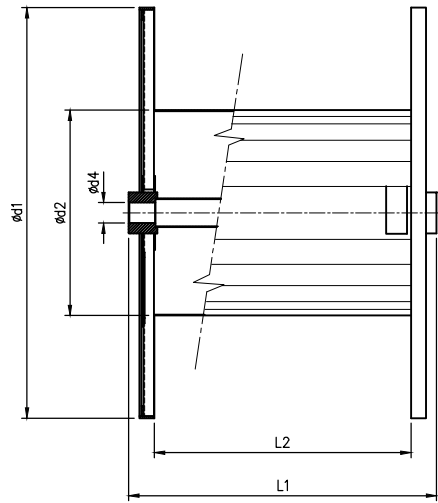
Special design to meet customers' request Dynamically balanced for line speed up to 50m/sec Finish painting acc. to customer request



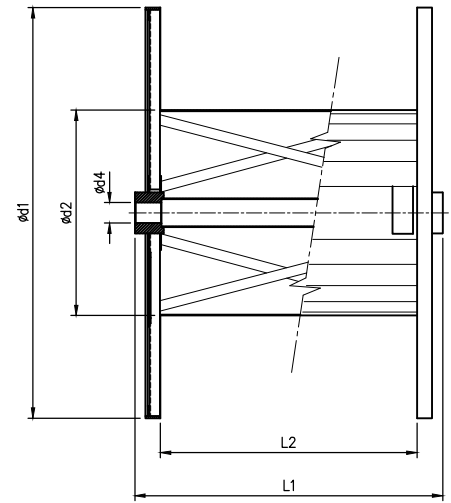
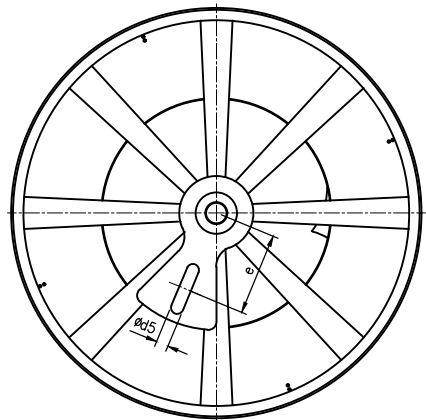
cable reels



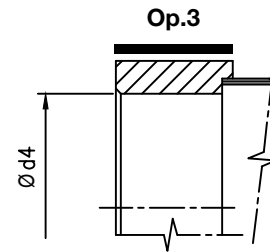
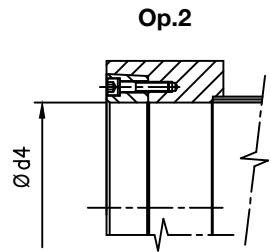
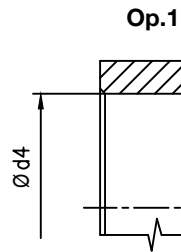




SMC-L



SMC-H





SIZE RANGE

Ref. DIN 46395

Ref. Customers' : Special requirements

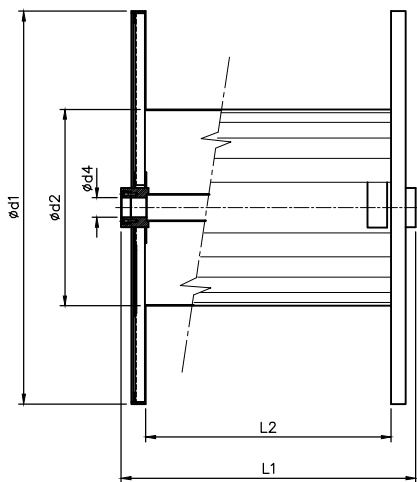
TECHNICAL PROPERTIES

Manufactured from high quality steel plates and tubes Welded by MIG/MAG process

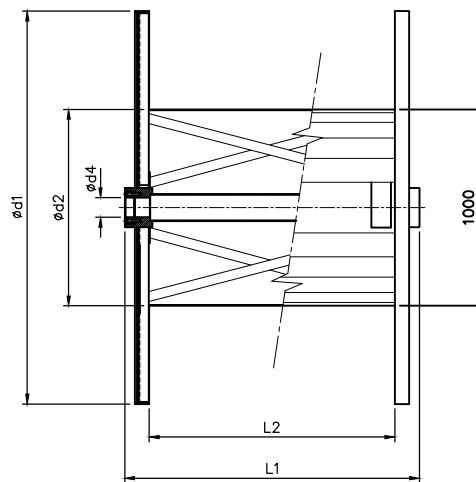
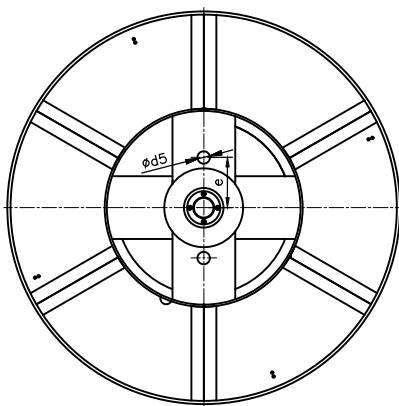
OPTIONS

Special design to meet customers' request Heat treatment on bosses Mainly known as steel cable reel and using by cable manufacturers Changeable hubs for pintle bores Finish painting acc. to customer request

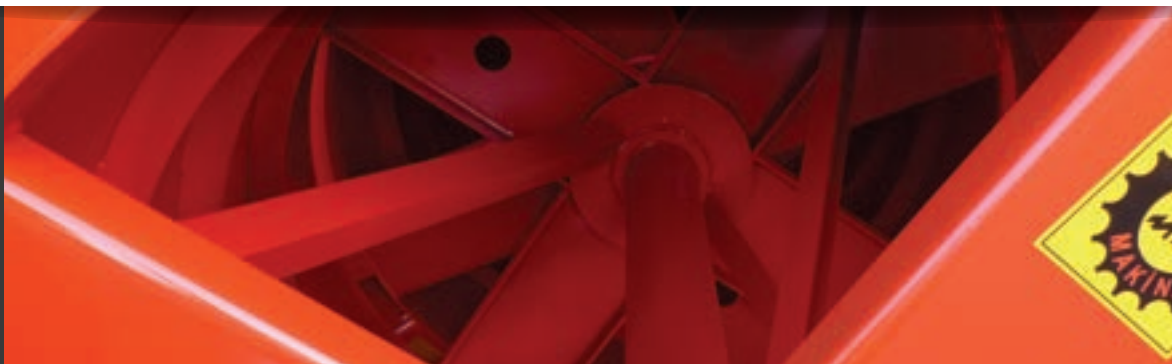
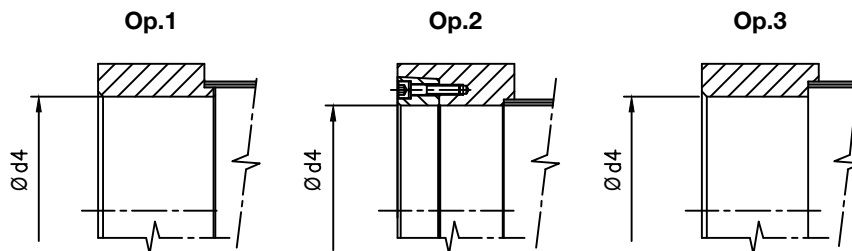


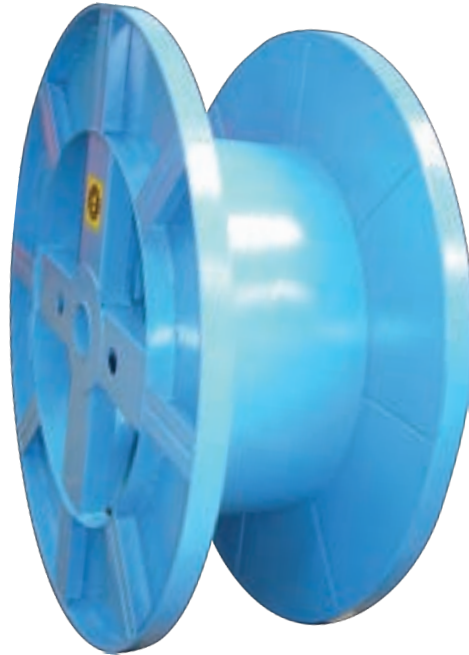


SMB-L



SMB-H





SIZE RANGE

Ref. DIN 46395

Ref. Customers' : Special requirements

TECHNICAL PROPERTIES

Manufactured from high quality steel plates and tubes Welded by MIG/MAG process

OPTIONS

Special design to meet customers' request Heat treatment on bosses Mainly known as steel cable reel and using by cable manufacturers Changeable hubs for pintle bores Finish painting acc. to customer request

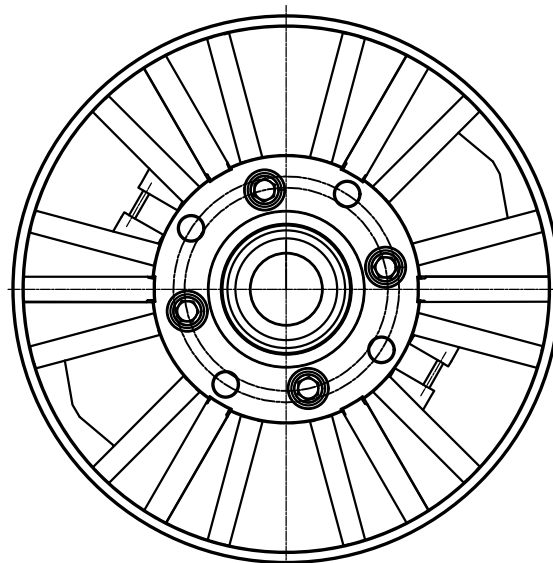
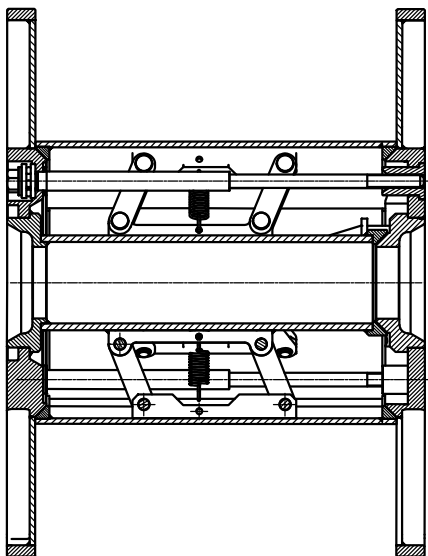


equipments





collapsible



SIZE RANGE

Ref. DIN 46395

Ref. Customers' : Special requirements

TECHNICAL PROPERTIES

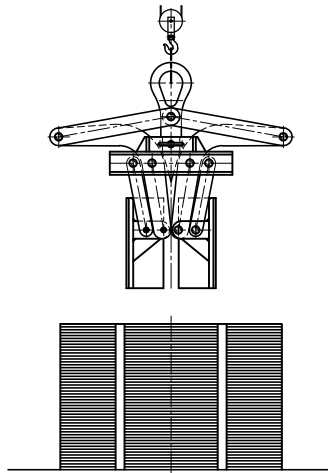
Manufactured from high quality steel plates and tubes Welded by MIG/MAG process

OPTIONS

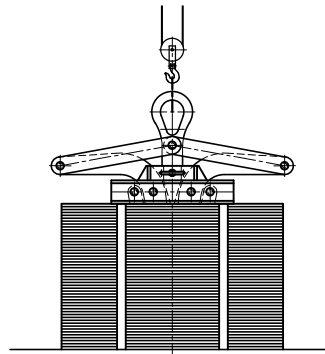
Special design to meet customers' request Heat treatment on bosses Mainly known as steel cable reel and using by cable manufacturers Changeable hubs for pintle bores Finish painting acc. to customer request



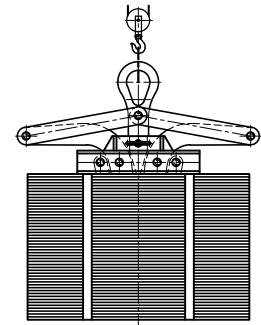
lifter



"LIFTER" READY TO BE
PLACED INTO THE COIL



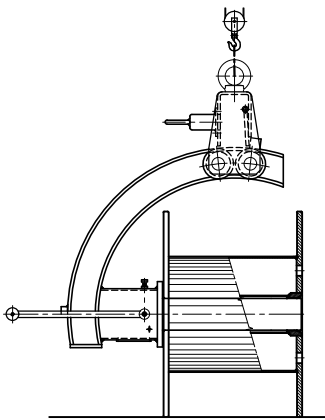
"LIFTER" CLAMPING THE COIL



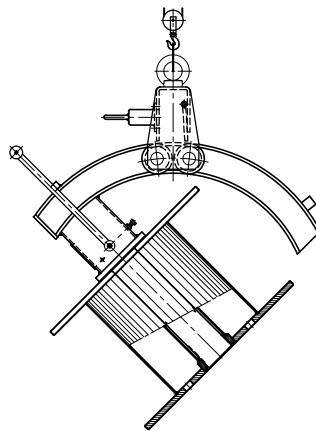
"LIFTER" TRANSPORTING
THE COIL



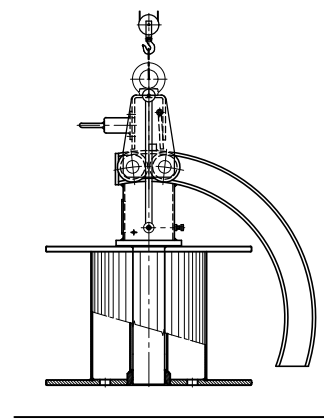
tilter



"TILTER" PLACED
IN THE REEL BORE



LIFTED "TILTER"
TILTING THE REEL



REEL TILTED THROUGH 90°



DIN 46391

d1	d2	d3	d4 Hole or pin	e	l1	l2		
710	355	80	30	100	550	400		
800	450				140	710	560	
1000	500					160	900	710
1250	630			40			1120	900
1400	710				50		300	1360
1600	800							
1800	1000	125	400	1450		1220		
2000	1000				1360		1120	
	1250							
2240	1120				1450		1220	
	1400							
2500	1250				1360		1120	
	1400							
2800	1800	140	65	600	1690	1380		
3000	2000				2000	1600		
3150	1800							
	2000							
3550	2000				2240	1800		
	2360							
3750	2360	200	80	1000	2500	200		
	2650							
4000	2650							
	2800							
4250	2650							
	2800							
4500	2800	2500	200					
	3000							

DIN 46395

d1	d2	d3	d4 Hole or pin	e	l1	l2		
315	125	36	8 bis 16	71	236	200		
	160				190	160		
355	140	56	16 bis 28	112	265	224		
	180				215	180		
160					300	250		
	200				236	200		
180					335	280		
	224				265	224		
500				200	140	160	375	315
	250			300			250	
560				224			425	355
	280			335			280	
630		250	475	400				
	315	375	315					
710		355	80	40 bis 63			300	530
800	450	600						500
900	450	670			560			
100	500	750			630			
1250	630	950			800			
1400	710	1060			900			
1600	800	1180			1000			
1800	1000	1320			1120			
2000	1120	1500	1250					
2240	1250	125	63	1700	1400			
2500	1500			1900	1600			
2800	1800	140		2120	1800			

options

DIN 46397

d1	d2	d3	l1	l2	d4 Hole or pin	e	t4/B
160	90	80	118	95	-	-	Variable on according to reel technical drawings and customer demands
200	112	100	150	118	-	-	
	125						
224	140	100	170	140	-	-	
	125						
	140						
250	160	127	190	160	-	-	
	180						
315	180	127	236	200	16	100	
	200						
	224						
355	200	127	212	180	28	100	
	200		265	224			
	224						
	250						
400	224	127	236	200	28	100	
	224		300	250			
	250						
	280						
450	250	127	265	224	28	100	
	250		355	280			
	280						
	315						
500	280	127	300	250	40	170	
	280		375	315			
	315						
	355						
560	315	127	355	280	40	170	
	315		425	355			
	355						
	400						
630	355	127	375	315	40	170	
	355		475	400			
	400						
	450						
710	400	250	425	355	50	250	
	400		530	450			
	150						
	500						
800	450	250	475	400	50	250	
	450		600	500			
	500						
	560						
1000	560	250	750	630	50	250	
	630						
	710						
1250	710	250	950	800	50	250	
	800						
	900						





SAR MAKiNA' s Culture

Our distinctive corporate culture is a common bond. We live by our values and strive for continuous improvement.







Global Presence

We are an international company.
While constantly extending our global presence,
we strengthen local responsibility.





SAR MAKİNA

SANAYİ VE TİCARET A.Ş.

Osmangazi Mh. Sanayi Cd. Kanuni Sk. No:12 PK. 41700 Darıca/Kocaeli
Tel: +90 262 653 90 82-PBX Fax: +90 262 653 90 89
marketing@sarmakina.com.tr