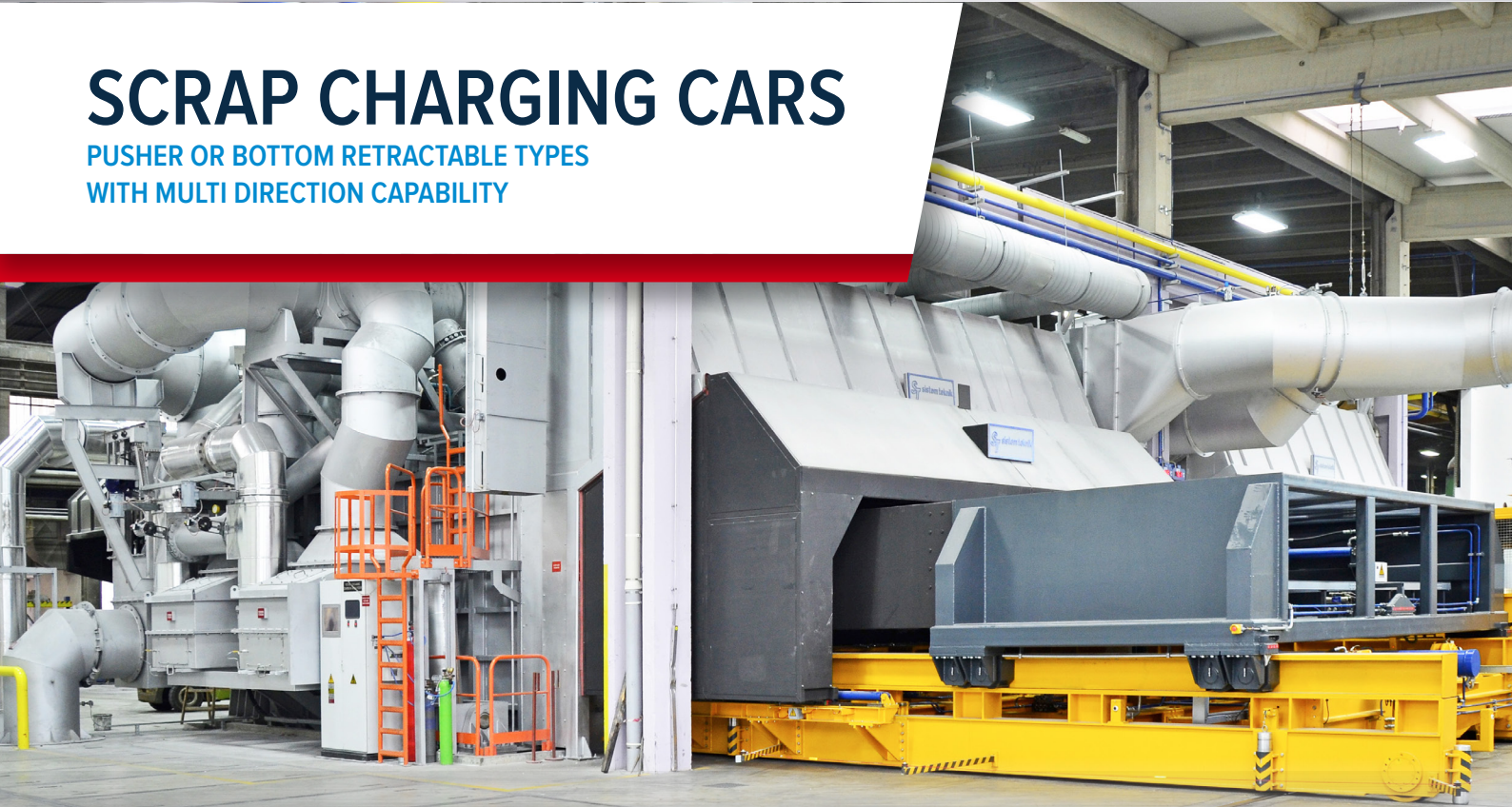


SCRAP CHARGING CARS

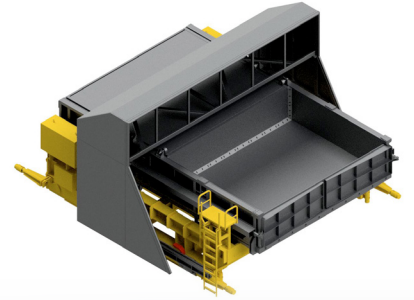
PUSHER OR BOTTOM RETRACTABLE TYPES
WITH MULTI DIRECTION CAPABILITY





SCRAP CHARGING CARS

PUSHER OR BOTTOM RETRACTABLE TYPES
WITH MULTI DIRECTION CAPABILITY



Sistem Teknik Scrap Charging Cars are designed to fit mainly to the furnace door design to have less no. of charging and also to dock to the furnace hood for avoiding the smoke escape.

There are two types of charging car design. One is suitable for charging on the ramp of the furnace with bottom retracted type (mainly for double chamber furnaces) and the other for charging the heart of the furnace by means of pusher plate.

Heavy duty constructions for the purpose with the charging capacities from 2 tons up to 20 tons.

Special design on rails for the existing casthouse scrap charging solutions.

With electrical or diesel power supply options.

Easy handling of scrap charging with replaceable charging boxes.



TAYSAD - TOSB
1.Cadde 14. Sok. No.3
41420 Çayırova

KOCAELI - TURKEY

T +90 262 658 22 26

F +90 262 658 22 38

info@sistemteknik.com

www.sistemteknik.com