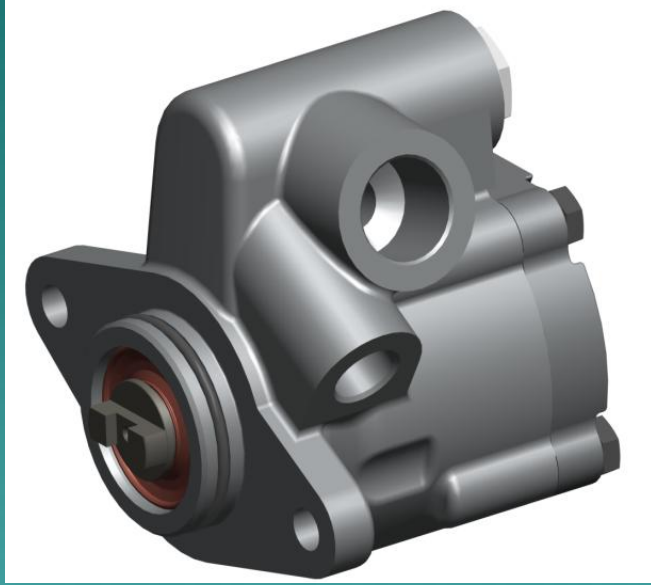


HEMA

ENDÜSTRİ A.Ş.



Paletli Pompalar

Vane Pumps

PALETLİ POMPA KODLAMA SİSTEMİ / Vane Pump Coding System

PL - 25 - 16 - R - 150 - 04 - B1 - BDR

PL - XX - XX - X - XXX - XX - XX - XXX

PORTLARIN YÖNÜ Direction of Ports

| KODU Code | PORTLARIN YÖNÜ / Direction of Ports |
|--------------|--|
| R | SAĞ / Right |
| L | SOL / Left |

ÇIKIŞ PORTU Outlet Port

| KODU Code | ÇIKIŞ PORTU / Outlet Port |
|--------------|------------------------------|
| A | M18x1.5 |
| B | M16x1.5 |
| C | M14x1.5 |
| D | 3/4-16" UNF-2B |

GİRİŞ PORTU Inlet Port

| KODU Code | GİRİŞ PORTU / Inlet Port |
|--------------|-----------------------------|
| A | M26x1.5 |
| B | 1-1/16"-12 UN-2B |
| C | 1-5/16"-12 UN-2B |

ŞAFT TİPİ Shaft Type

| KODU Code | ŞAFT TİPİ / Drive Shaft |
|--------------|--|
| A1 | HAÇ KAVRAMA Ø 24 / Cross-Slotted Disc Ø 24 |
| A2 | HAÇ KAVRAMA Ø 29.2 / Cross-Slotted Disc Ø 29.2 |
| B1 | 16/32 DP 11 DİŞ ANSİ B 92.1 / 11 Teeth 16/32 ANSI B92.1 |

FLANŞ TİPLERİ Mounting Flange Type

| KODU Code | FLANŞ TİPİ / Flange Type |
|--------------|-----------------------------|
| 01 | D TİPİ 36° / D Type 36° |
| 02 | D TİPİ 78° / D Type 78° |
| 03 | G TİPİ 25° / G Type 25° |
| 04 | SAE-A 25° |

BASINÇ Pressure

| KODU Code | BASINÇ / Pressure |
|--------------|---|
| 000 | BASINÇ EMNİYET VALFSIZ Without Pressure Relief Valve |
| 100 | 100 Bar |
| 110 | 110 Bar |
| 120 | 120 Bar |
| 130 | 130 Bar |
| 140 | 140 Bar |
| 150 | 150 Bar |
| 160 | 160 Bar |
| 170 | 170 Bar |

DÖNÜŞ YÖNÜ Rotation

| KODU Code | DÖNÜŞ YÖNÜ / Rotation |
|--------------|--------------------------|
| R | SAĞ / Clockwise |
| L | SOL / Anti-Clockwise |

KONTROLLÜ DEBİ Contr. Flow Rate

| KODU Code |
|--------------|
| 8 |
| 9 |
| 12 |
| 16 |
| 21 |
| 25 |

İLETİM HACMİ Displacement

| KODU Code |
|--------------|
| 14 |
| 17 |
| 21 |
| 25 |
| 28 |
| 30 |

PL

TEKNİK BİLGİLER / Technical Data

| KODU Code | İLETİM HACMİ Displacement cm ³ /dev - cm ³ /rev | EN DÜŞÜK DEBİ / Minimum Flow Qmin: lt/dak - L/min T:50 °C P:50 Bar 500 rpm |
|--------------|---|--|
| 14 | 14 | 4.5 |
| 17 | 17.5 | 5.9 |
| 21 | 21 | 7.5 |
| 25 | 25 | 9.4 |
| 28 | 28 | 10.8 |
| 30 | 30 | 11.8 |

Diğer İletim Hacimleri için Lütfen HEMA Endüstri A.Ş. Teknik Bölümü ile İrtibata Geçiniz. /

For other displacement please contact with HEMA Industry A.S. technical department.

| KODU Code | KONTROLLÜ DEBİ Contr. Flow Rate Qmin: lt/dak - L/min | KONTROLLÜ DEBİ ARALIĞI / Contr. Flow Rate Limits Qmin: lt/dak - L/min T:50 °C P:10 Bar 500 rpm | | İLETİM HACMİ Delivery Rate cm ³ /dev - cm ³ /rev | | | | | |
|--------------|---|---|------|--|------|----|----|----|----|
| | | Qmin | Qmax | 14 | 17.5 | 21 | 25 | 28 | 30 |
| 08 | 8 | 7.2 | 10.4 | X | X | | | | |
| 09 | 9 | 8.1 | 11.7 | X | X | | | | |
| 12 | 12 | 10.8 | 15.6 | X | X | X | | | |
| 16 | 16 | 14.4 | 20.8 | | X | X | X | | |
| 20 | 20 | 18 | 26 | | | X | X | X | |
| 25 | 25 | 22.5 | 32.5 | | | | X | X | X |

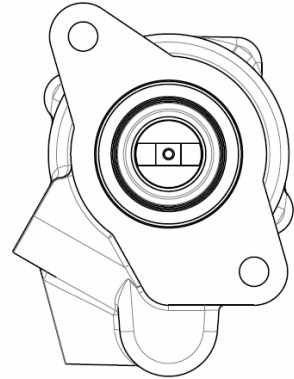
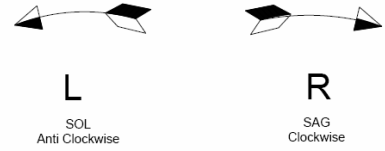
X: OLASI VERSİYONLAR

Possible Versions

TEKNİK BİLGİLER / Technical Data

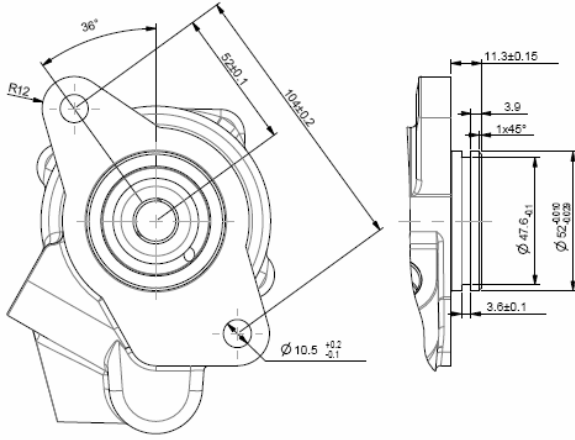
| KODU Code | BASINÇ TOLERANS ARALIĞI Pressure Tolerance at 500 Devir/dak - 500 rpm |
|--------------|---|
| 000 | BASINÇ EMNİYET VALFSİZ / Without Pressure Relief Valve |
| 100 | 100-110 |
| 110 | 110-120 |
| 120 | 120-130 |
| 130 | 130-140 |
| 140 | 140-150 |
| 150 | 150-160 |
| 160 | 160-170 |
| 170 | 170-180 |

| KODU Code | DÖNÜŞ YÖNÜ / Rotation |
|--------------|-----------------------|
| R | SAĞ / Clockwise |
| L | SOL / Anti-Clockwise |

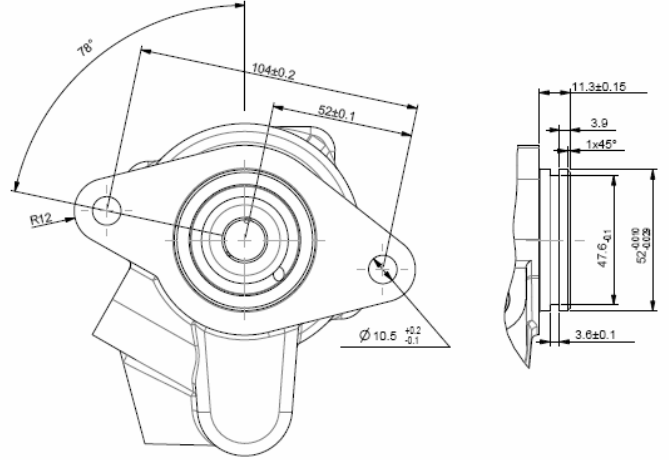


FLANŞ TİPLERİ / Flange Types

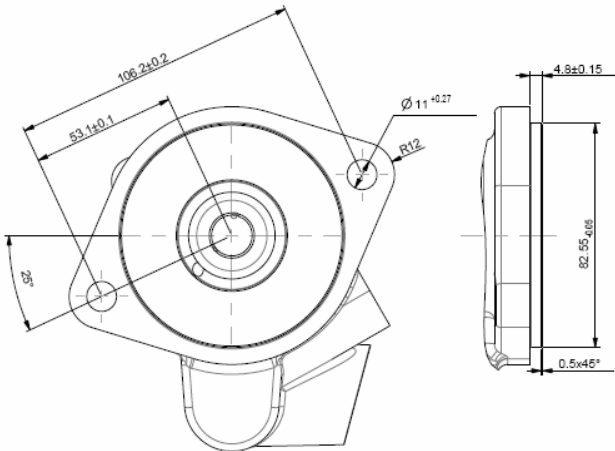
| KODU Code | FLANŞ TİPİ / Flange Type |
|--------------|--------------------------|
| 01 | D TİPİ 36° / D Type 36° |



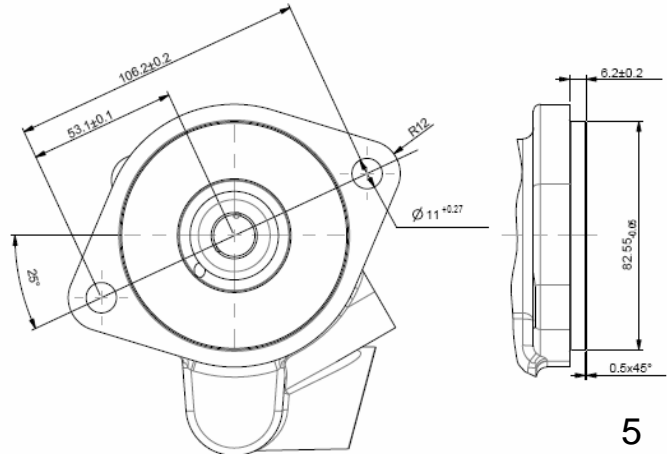
| KODU Code | FLANŞ TİPİ / Flange Type |
|--------------|--------------------------|
| 02 | D TİPİ 78° / D Type 78° |



| KODU Code | FLANŞ TİPİ / Flange Type |
|--------------|--------------------------|
| 03 | G TİPİ 25° / G Type 25° |

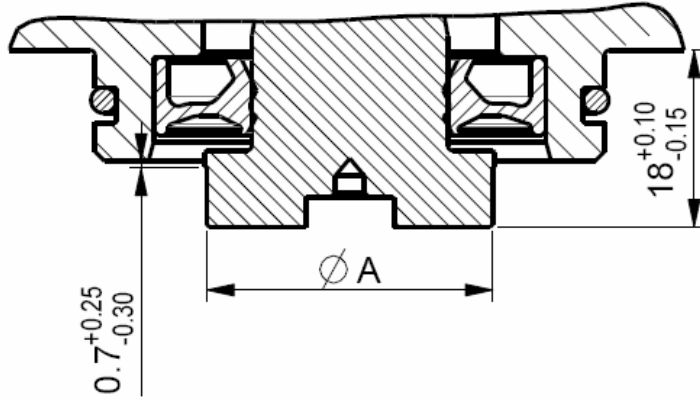


| KODU Code | FLANŞ TİPİ / Flange Type |
|--------------|--------------------------|
| 04 | SAE-A 25° |

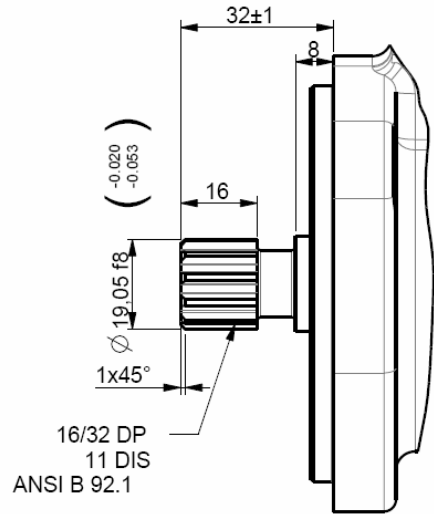


ŞAFT TIPLERİ / Drive Shafts

| KODU Code | ŞAFT TİPİ / Drive Shaft |
|--------------|--|
| A1 | HAÇ KAVRAMA Ø 24 / Cross-Slotted Disc Ø 24 |
| A2 | HAÇ KAVRAMA Ø 29.2 / Cross-Slotted Disc Ø 29.2 |

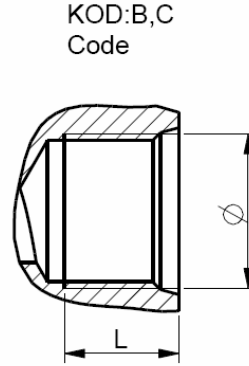
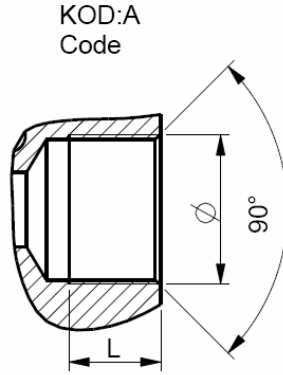


| KODU Code | ŞAFT TİPİ / Drive Shaft |
|--------------|--|
| B1 | 16/32 DP 11 DİŞ ANSI B 92.1 / 11 Teeth 16/32 ANSI B92.1 |

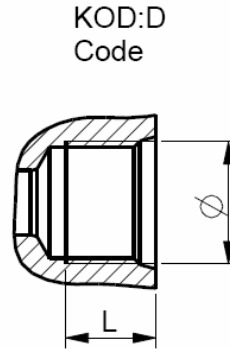
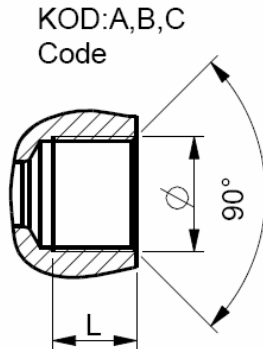


DELİK TIPLERİ / Hole Types

| KODU Code | GİRİŞ PORTU / Inlet Port | | |
|--------------|--------------------------|------------|----------------------|
| | Ø | L | STANDART Standard |
| A | M26x1.5 | Min. 16 mm | DIN ISO 6149-1 |
| B | 1-1/16"-12 UN-2B | Min. 20 mm | ISO 11926-1 |
| C | 1-5/16"-12 UN-2B | Min. 20 mm | |

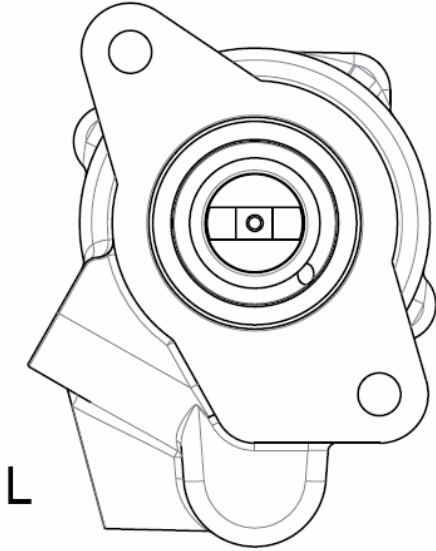


| KODU Code | ÇIKIŞ PORTU / Outlet Port | | |
|--------------|---------------------------|--------------|----------------------|
| | Ø | L | STANDART Standard |
| A | M18x1.5 | Min. 14.5 mm | DIN ISO 6149-1 |
| B | M16x1.5 | Min. 13 mm | |
| C | M14x1.5 | Min. 11.5 mm | |
| D | 3/4-16" UNF-2B | Min. 14.3 mm | ISO 11926-1 |



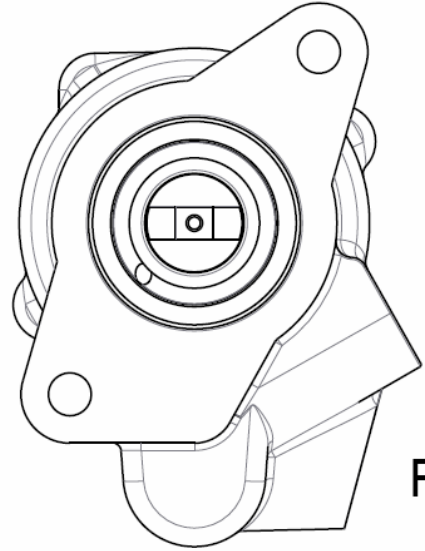
PORT YÖNLERİ/ *Direction of Ports*

| KODU <i>Code</i> | PORTLARIN YÖNÜ / <i>Direction of Ports</i> |
|---------------------|--|
| R | SAĞ / <i>Right</i> |
| L | SOL / <i>Left</i> |



L

PORTLAR SOLDA
Ports are at Left



R

PORTLAR SAĞDA
Ports are at Right

TEKNİK BİLGİLER / Technical Data

Pompa dizayn hesaplarında aşağıdaki parametreler esas alınır.

The design calculations for vane pumps are based on the following parameters.

V (cm³/dev) : İletim Hacmi

V (cm³/rev) : Displacement

Q (lt/dak) : Debi

Q (l/min) : Flow

P (bar) : Basınç

P (bar) : Pressure

M (Nm) : Tork

M (Nm) : Torque

n (dev/dak) : Devir

n (rpm) : Speed

N (Kw) : Güç

N (Kw) : Power

μ_v (%) : Volümetrik Verim

μ_v (%) : Volumetric efficiency

μ_m (%) : Mekanik Verim

μ_m (%) : Mechanical efficiency

μ_t (%) : Toplam Verim

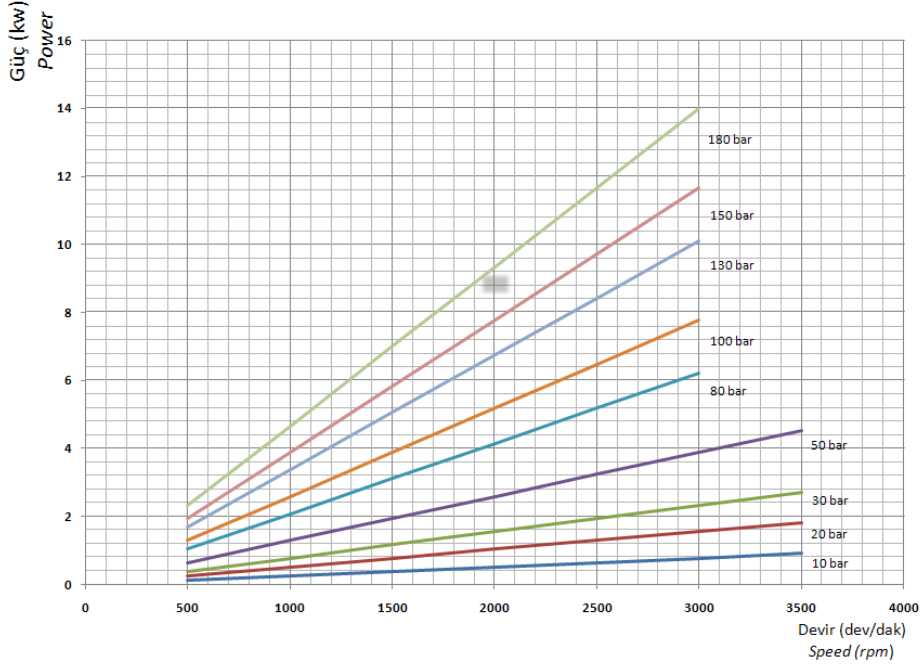
μ_t (%) : Toplam Verim

$$N (kw) = \frac{PxQ}{600 \times \mu_m}$$

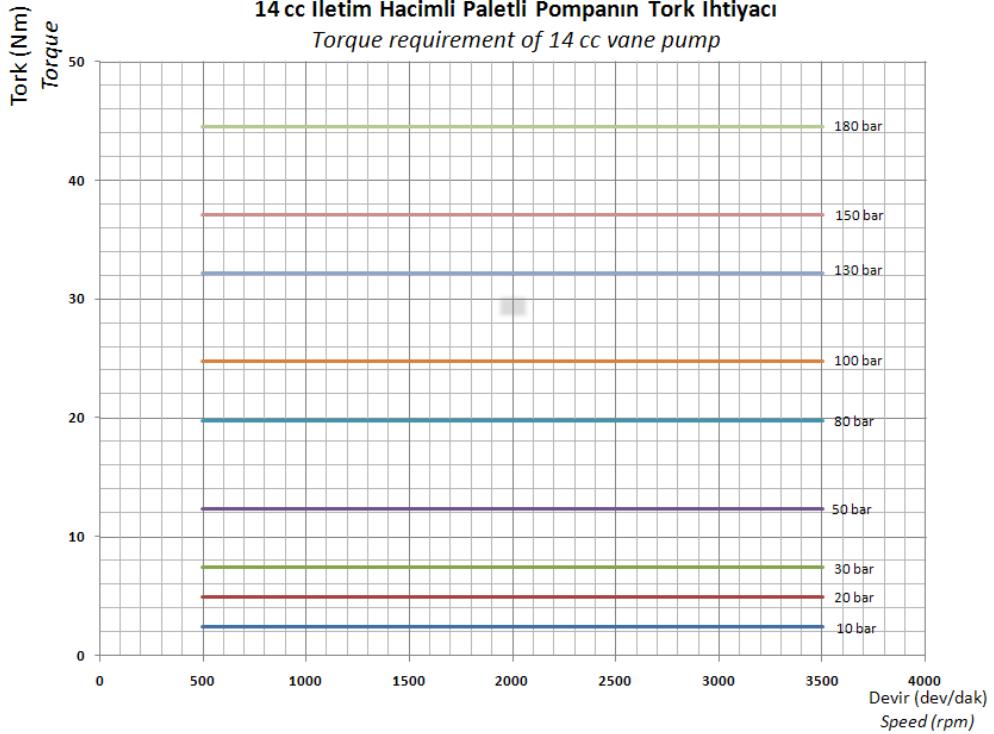
$$M (Nm) = \frac{1.59 \times V \times P}{600 \times \mu_m}$$

Tavsiye edilen verim : μ = % 90
Recommended efficiency

14 cc İletim Hacimli Paletli Pompanın Güç Tüketimi
Power consumption of 14 cc vane pump



14 cc İletim Hacimli Paletli Pompanın Tork İhtiyacı
Torque requirement of 14 cc vane pump



TEKNİK BİLGİLER / Technical Data

