

# PRESS BRAKE TEKNOLOGIES

# BRAKE



- POWER BEND ST
- MICRO BEND
- ECO BEND EXPERT
- HEAVY DUTY



**ERMAKSAN**  
INNOVATIVE TECHNOLOGIES

[www.ermaksan.com.tr](http://www.ermaksan.com.tr)

- GREEN PRESS FX SERVO
- EVO III
- SPEED BEND PRO
- POWER BEND PRO

"Ermaksan is a global technology company that offers innovative solutions to industrial life."



#### Who are we ?

Ermaksan produces innovative, high-quality, and high value-added products and solutions with its brands. In its journey exceeding half a century, it has been taking determined steps towards the future by maintaining its strong stance in the fields of sheet metal processing, additive manufacturing, optoelectronics, and advanced defence technologies.

Continuing its investments on the path of sustainable growth without slowing down, Ermaksan contributes to efficient production in more than 120 countries through ERMAKUSA in the USA, ERMAK Deutschland GmbH in Germany and its various other distinguished dealers around the world. In order to meet the customer expectations of today's rapidly changing world and to offer the manufacturing technologies of the future today, the company produced Turkey's first metal 3D printer with the brand ERMAKSAN ADDITIVE and offered it to the additive manufacturing industry. EON PHOTONICS brand, which has Turkey's first private sector semiconductor Optoelectronic R&D centre, continues its production and development activities of high-tech products such as laser technologies, FBG sensors, CNC controllers, and Industry 4.0 applications.

With the innovative perspective of 21st century, Ermaksan continues its activities with the aim of being among the world's leading manufacturers in the fields of technology and R&D. By constantly monitoring new trends and customer expectations, Ermaksan designs and manufactures advanced technology, high value-added, environmentally friendly and energy-saving machines, and takes firm steps towards a more sustainable future by using resources effectively and efficiently.

#### Press Brake Technologies

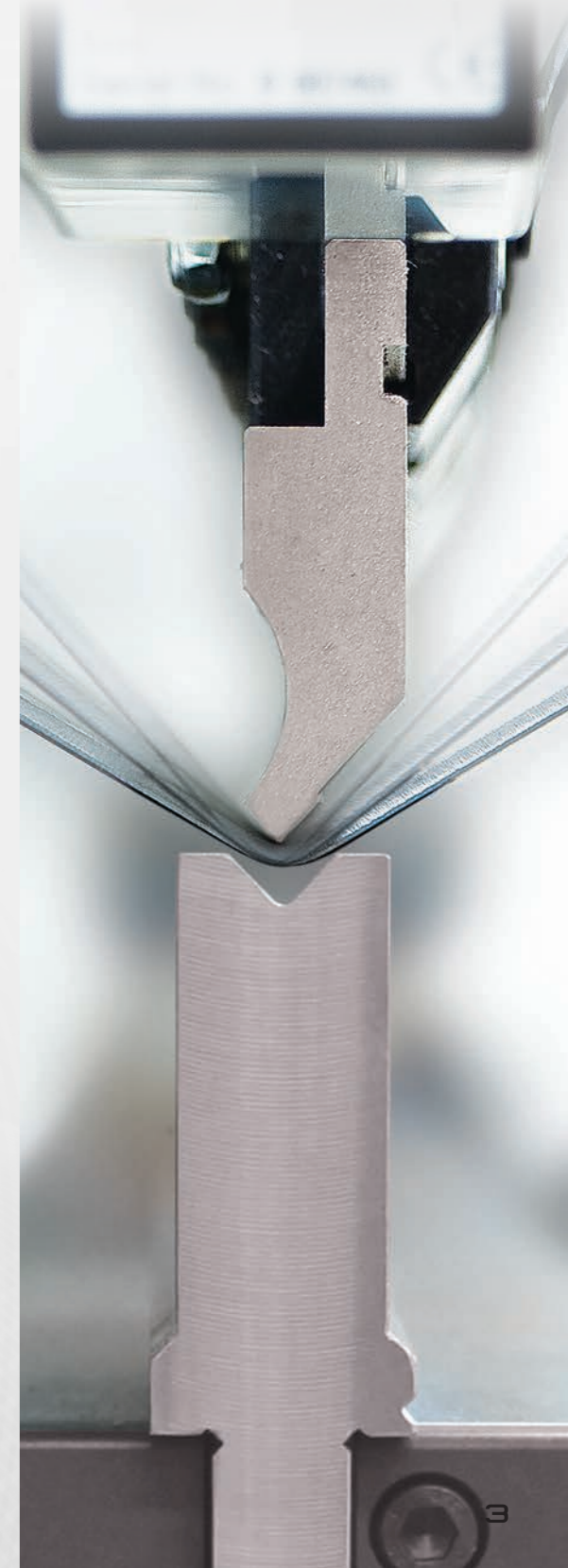
Ermaksan press brakes are made of high-strength monoblock st44 quality steel and have a rigid structure that has been relieved of tension with the latest technology. Thus, their longevity is ensured. Thanks to the hardened and ground dies capable of precision bending, it is resistant to harsh conditions.

While being user-friendly with both standard and optional hardware features, Ermaksan press brakes make your investments profitable with the economic power they add to your business.

Press brakes manufactured by Ermaksan's expert engineers using advanced technologies have been contributing to high-quality and efficient production all over the world for years. Along with the dynamics of digital transformation, we offer tailor-made solutions to our customers, make production more flexible and efficient, and offer the optimum solutions. Thus, we feel the proud of contributing to smart production processes in the fourth industrial revolution.



1965



**GREEN PRESS FX SERVO**

PAGE  
**08**



**EVO III**

PAGE  
**14**



**SPEED BEND PRO**

\* This cabin design is offered as an option upon customer request for all press brakes.

PAGE  
**22**



**POWER BEND PRO**

PAGE  
**30**



**POWER BEND ST**

PAGE  
**38**



**MICRO BEND**

PAGE  
**42**



**ECO BEND EXPERT**

PAGE  
**46**



**HEAVY DUTY**

PAGE  
**86**



# GREEN PRESS

## FX SERVO

Servo-Electric  
Press Brake



Standard 6 axes  
Y1, Y2, X, R, Z1, Z2

40 - 65 - 80 - 100 ton  
capacity options

1,6 - 2,1 - 2,6 - 3,1m  
length options

Body guard light  
curtain

98 % energy saving  
in standby

ER99, Delem  
66T

**Environmental Technology**

Green Press FX Servo press brake, one of our green press group machines with its quiet operation and low energy consumption features, consumes approximately 69% less energy than hydraulic press brakes.

The machine does not require hydraulic oil to operate. The maintenance cost is minimal since there are no hydraulic system components such as hydraulic filters and sealing elements. In addition, it does not cause the problem of contamination of the working environment due to oil leakage.

The sheet metal can be easily controlled from the front by the operator with the sensitive carriage and the sliding front support arms that can move left and right on the rail. Moreover, the lengths of the pieces can be measured thanks to the rulers mounted on the front support arms. The sheet metal can be fixed from the front with the help of the latch mounted inside the T channel.



**QUIET OPERATION**

The beam's downwards and return movements are ensured by means of springs. Thus, the machine works silently and does not create any noise pollution that may disturb the environment.

**ENVIRONMENTALLY FRIENDLY**

Since a servo motor with high energy efficiency is used in the machine, which does not require industrial oil, it is an environmentally friendly machine, standing out with its high power and low energy consumption.

**LOW ENERGY CONSUMPTION**

An energy efficient servo motor is used. Motors do not operate when the upper beam is not moving. It provides an energy saving of 69%.



**LOW MAINTENANCE COST**

Hydraulic system and cylinders are not used in the machine. Since it is a completely mechanical machine, you can use it with less maintenance cost.

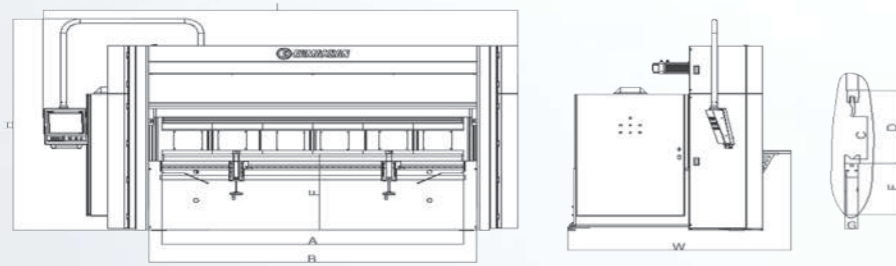
**UNLIMITED FULL LENGTH BENDING**

Contrary to the known press brake, this machine does not have a throat. Performs full-length bends between the feet. It has no restrictions according to the hydraulic press.

**RIGID CONSTRUCTION**

It has a strong body with dynamic and static rigidity processed with high precision.





TECHNICAL SPECIFICATIONS		GP FX SERVO 1003	GP FX SERVO 8026	GP FX SERVO 6521	GP FX SERVO 4016
<b>BENDING LENGHT (A)</b>	mm (feet)	3100 (10')	2600 (8,5')	2100 (6,8')	1600 (5,2')
<b>BENDING POWER</b>	Ton (Us Tons)	100 (110)	80 (88)	65 (72)	40 (44)
<b>SRANDARD V-DIE OPENING (V)</b>	mm (inch)	50 (1,97)	50 (1,97)	50 (1,97)	50 (1,97)
<b>SHEET THICKNESS (RM=42kgf/mm<sup>2</sup>) (T)</b>	mm (inch)	5 (0,19)	5 (0,19)	5 (0,19)	4,5 (0,19)
<b>DISTANCE BETWEENN COLUMNS (B)</b>	mm (inch)	3360 (132,3)	2860 (112,6)	2360 (92,9)	1860 (73,2)
<b>Y AXIS RAPID SPEED</b>	mm/s (inch/s)	75 (2,95)	90 (3,54)	110 (4,33)	110 (4,33)
<b>Y AXIS WORKING SPEED</b>	mm/s (inch/s)	10 (0,39)	10 (0,39)	10 (0,39)	10 (0,39)
<b>Y AXIS RETURN SPEED</b>	mm/s (inch/s)	75 (2,95)	90 (3,54)	110 (4,33)	110 (4,33)
<b>TRAVEL IN X AXIS</b>	mm (inch)	800 (31,50)	800 (31,50)	800 (31,50)	800 (31,50)
<b>SPEED OF X AXIS</b>	mm/s (inch/s)	500 (19,69)	500 (19,69)	500 (19,69)	500 (19,69)
<b>TRAVEL IN R AXIS</b>	mm (inch)	250 (9,84)	250 (9,84)	250 (9,84)	250 (9,84)
<b>SPEED OF R AXIS</b>	mm/s (inch/s)	350 (13,78)	350 (13,78)	350 (13,78)	350 (13,78)
<b>SPEED OF Z1, Z2 AXIS</b>	mm/s (inch/s)	1000 (39,37)	1000 (39,37)	1000 (39,37)	1000 (39,37)
<b>BACK GAUGE FINGER BLOCKS</b>	Amount	2	2	2	2
<b>NUMBER OF SHEET SUPPORT (Slidind front arms)</b>	Amount	2	2	2	2
<b>MOTOR POWER</b>	kW (Hp)	2x5,5 (2x7,37)	2x5,5 (2x7,37)	2x5,5 (2x7,37)	2x5,5 (2x7,37)
<b>STROKE (C)</b>	mm (inch)	300 (11,81)	300 (11,81)	300 (11,81)	300 (11,81)
<b>DAYLIGHT (D)</b>	mm (inch)	590 (23,23)	590 (23,23)	590 (23,23)	590 (23,23)
<b>TABLE HEIGHT (F)</b>	mm (inch)	1050 (41,34)	1050 (41,34)	1050 (41,34)	1050 (41,34)
<b>TABLE WIDTH (G)</b>	mm (inch)	60 (2,36)	60 (2,36)	60 (2,36)	60 (2,36)
<b>LENGTH (L)</b>	mm (inch)	4870 (191,7)	4370 (172,0)	3870 (152,4)	3370 (132,7)
<b>HEIGHT (H)</b>	mm (inch)	2890 (113,8)	2890 (113,8)	2890 (113,8)	2890 (113,8)
<b>WIDTH (W)</b>	mm (inch)	2290 (90,2)	2290 (90,2)	2290 (90,2)	2290 (90,2)
<b>WEIGHT</b>	kg. (lbr.)	7500 (16538)	6500 (14333)	5650 (12458)	4850 (10694)

\* Bending speed can not exceed 10mm/sec (0,39inc/sec) according to the CE regulations.

STANDARD EQUIPMENT	OPTIONAL EQUIPMENT
• Standard machine sizes; 1600, 2100, 2600, 3100 mm	• Optional daylight
• Standard machine powers; 40, 65, 80, 100 tons	• Single axis, 2 axis, 6 axis backgauge options
• Machine stroke 300mm	• WILA NSCL type top tool holder options
• Daylight 590mm	• WILA NSCR type bottom tool holder options
• No need for crowning	• Motorized crowning
• Standard 4 axis backgauge. X: 800 mm, R: 250 mm, Z1, Z2	• LED-bar bending guide system
• Control units; ER TOUCH 15, ER99, DELEM 66T	• AKAS Laser front protection
• HEIDENHAIN linear scales	• DSP Laser front protection
• Electrical panel designed and manufactured from SIEMENS	• AP3 + AP4 sheet support system
electrical and automation products in accordance with the CE regulations	• Rear sheet support system
• ERMAKSAN Promecam top tool holder	• Optional control panel arm
• ROLLERI PS135-85-R08 top tool	• Control units; ER TOUCH 21
• ROLLERI M460-R bottom tool	• Delem 69T, Cybelec Modeva 19T
• ERMAKSAN bottom tool holder	
• WILA OB-I-MC-TY/UPB mechanical bottom tool clamping system	
• Sliding front support arms with T slot and mm/inch scale	
• LEUZE MLC 100 front safety system	
• Rear sliding cover + switch safety system	
• Side cover + switch safety system	
• LED-light enclosures	



# EVO III

# Hybrid Press Brake



Large throat depth - 410 mm

High stroke (275) and daylight (550)

2.6 - 4.1m length options

Very high speed cycle (200 - 10 - 190)

100 - 260 ton capacity options

Std. 6 axes - Y1, Y2, X, R, Z1, Z2



**Next Generation Technology**

While manufacturers turn to machines with low energy consumption in order to lower their operating profits, they also shape their production with social responsibility awareness such as environmental awareness and effective use of energy resources. In order to meet these expectations of our customers, we have combined our press brake production experience of more than 30 years with today's most advanced technologies, and we have offered the next generation EVO III series hybrid press brakes to the benefit of the sector.

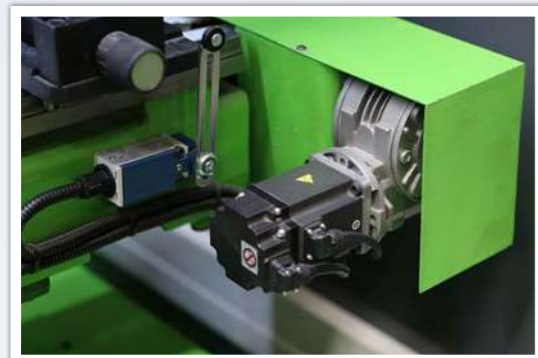
The EVO III series, which has a length of 4.1 meters and a capacity of up to 260 tons, offers its users the opportunity to perform difficult bends under high stroke. 6-axis and motorized crowning system features are offered as standard to enable you to obtain more precise bending.

Our solutions with less energy consumption, which were developed with our environmentally friendly perspective, help our customers gain competitive advantage by reducing their total operating costs.



**CLOSED LOOP HYDRAULIC SYSTEM**

It has a special closed loop hydraulic system. Maintenance requirement is minimal compared to hydraulic machines.



**SERVO MOTOR BACKGAUGE**

All motors used in the back rest are servo motors. Therefore, the sheet metal can be positioned with minimum precision.

**REALISTIC 3D MODELLING (ER TOUCH)**

The 3D feature of the controller allows the operator to distinguish the pieces to be processed from each other and provides ease of application.

**LOW ENERGY CONSUMPTION**

The special hydraulic system has low energy consumption. It is also environmentally friendly with an average oil consumption of 34.5 litres.

**QUIET OPERATION**

With a sound level of 63 dB, it is the quietest model among sheet metal bending machines.

**LOW OPERATING COST**

Thanks to its low energy consumption, the operating cost is minimal. Thus, it provides advantages to the its users with high efficiency and low operating costs.



## GENERAL SPECIFICATIONS

### STANDARD EQUIPMENT

- Steel body with mono bloc welding of ST44 material which is rigid against bending and high tension
- 6 axes (Y1, Y2, X, R, Z1, Z2)
- 4 axis (X, R, Z1, Z2) CNC controlled back gauge system with AC servo motor
- HAWE hydraulic system
- CNC controlled motorized crowning system
- Top and bottom tools hardened and grinded (835 mm length)
- Control units; ER TOUCH, DELEM 66T, ER99
- 3D colour graphics display and offline software
- Electrical panel designed and manufactured from SIEMENS electrical and automation products in accordance with the CE regulations
- Backlight protection
- Y1+Y2 axis synchronization with a tolerance of 0.01 provided by linear scales
- CE compliant foot pedal
- Sliding front support arms with T slot and mm/inch scale
- 410 mm throat depth (60 -320 tons) and 510 mm throat depth (400 tons)
- Leuze front light protection system

### OPTIONAL EQUIPMENT

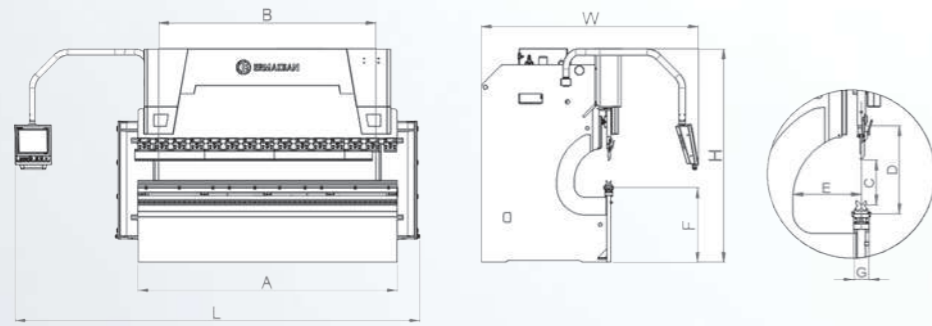
- Control units; ER TOUCH, DELEM 69, DELEM 66, VISITOUCH PAC, ESA 860, ESA 875, STEP ER 99
- 4,5,6 axis back gauge options
- AKAS LASER finger protection system
- Laser angle measurement system
- Hydraulic and hydro-dynamic crowning systems (Manual crowning, motorized crowning, hydro-mechanical crowning, hydraulic crowning, hydro-dynamic crowning)
- Pneumatic top tool holder system
- Hydraulic and hydro-dynamic crowning systems
- CNC controlled automatic bend sheet support arms (AP3+AP4 axes)
- Automatic sliders lubricating system
- Hydraulic oil cooling and heating systems
- Electric panel heating and cooling system
- Controller heating system
- Special throat depths
- Special top and bottom tools
- Cybelec Offline etc. software options
- Tool storage cabinet
- Back closed cage
- Sliding front support arms with T slot and mm/inch scale
- Led bar
- Rear shutter

· **LOW** CONSUMPTION

· **MAXIMUM** PRODUCTIVITY

· **HIGH** PRECISION





TYPE	BENDING LENGTH	BENDING POWER	STANDARD V CHANNEL WIDTH	SHEET THICKNESS (Rm=42kg/mm2)	DISTANCE BETWEEN COLUMNS	Y RAPID SPEED	Y WORKING SPEED	Y RETURN SPEED	CROWNING	TRAVEL IN X AXIS	SPEED OF X AXIS	TRAVEL OF R AXIS	SPEED OF R AXIS	SPEED OF TRAVEL Z1,Z2 AXIS
	A	V	T	B										
	mm (inch)	Ton (tons)	mm (inch)	mm (inch)	mm (inch)	mm/s (inch/s)	mm/s (inch/s)	mm/s (inch/s)	standard	mm (inch)	mm/s (inch/s)	mm (inch)	mm/s (inch/s)	mm/s (inch/s)
2600 - 100 (8,53 - 110)	2600 (102,36)	100 (110)	50 (1,97)	5 (0,20)	2200 (86,61)	200 (7,87)	10 (0,39)	200 (7,87)	Motorized	800 (31,50)	500 (19,69)	250 (9,84)	350 (13,78)	1000 (39,37)
2600 - 135 (8,53 - 149)	2600 (102,36)	135 (149)	50 (1,97)	6 (0,24)	2200 (86,61)	160 (6,30)	10 (0,39)	180 (7,09)	Motorized	800 (31,50)	500 (19,69)	250 (9,84)	350 (13,78)	1000 (39,37)
3100 - 100 (10,17 - 110)	3100 (122,05)	100 (110)	50 (1,97)	5 (0,20)	2600 (102,36)	200 (7,87)	10 (0,39)	200 (7,87)	Motorized	800 (31,50)	500 (19,69)	250 (9,84)	350 (13,78)	1000 (39,37)
3100 - 135 (10,17 - 149)	3100 (122,05)	135 (149)	50 (1,97)	6 (0,24)	2600 (102,36)	200 (7,87)	10 (0,39)	180 (7,09)	Motorized	800 (31,50)	500 (19,69)	250 (9,84)	350 (13,78)	1000 (39,37)
3100 - 175 (10,17 - 193)	3100 (122,05)	175 (193)	50 (1,97)	6 (0,24)	2600 (102,36)	200 (7,87)	10 (0,39)	192 (7,56)	Motorized	800 (31,50)	500 (19,69)	250 (9,84)	350 (13,78)	1000 (39,37)
3100 - 220 (10,17 - 242)	3100 (122,05)	220 (242)	110 (4,33)	11 (0,43)	2600 (102,36)	197 (7,76)	10 (0,39)	174 (6,85)	Motorized	800 (31,50)	500 (19,69)	250 (9,84)	350 (13,78)	1000 (39,37)
3100 - 260 (10,17 - 286)	3100 (122,05)	260 (286)	120 (4,72)	13 (0,51)	2600 (102,36)	165 (6,50)	9,5 (0,37)	129 (5,08)	Motorized	800 (31,50)	500 (19,69)	250 (9,84)	350 (13,78)	1000 (39,37)
3760 - 135 (12,34 - 148)	3760 (148,03)	135 (149)	50 (1,97)	5 (0,20)	3250 (127,95)	200 (7,87)	10 (0,39)	180 (7,09)	Motorized	800 (31,50)	500 (19,69)	250 (9,84)	350 (13,78)	1000 (39,37)
3760 - 175 (12,34 - 192)	3760 (148,03)	175 (193)	50 (1,97)	6 (0,24)	3250 (127,95)	200 (7,87)	10 (0,39)	192 (7,56)	Motorized	800 (31,50)	500 (19,69)	250 (9,84)	350 (13,78)	1000 (39,37)
3760 - 220 (12,34 - 242)	3760 (148,03)	220 (242)	80 (3,15)	8 (0,31)	3250 (127,95)	197 (7,76)	10 (0,39)	174 (6,85)	Motorized	800 (31,50)	500 (19,69)	250 (9,84)	350 (13,78)	1000 (39,37)
3760 - 260 (12,34 - 286)	3760 (148,03)	260 (286)	80 (3,15)	8 (0,31)	3250 (127,95)	165 (6,50)	9,5 (0,37)	129 (5,08)	Motorized	800 (31,50)	500 (19,69)	250 (9,84)	350 (13,78)	1000 (39,37)
4100 - 135 (13,45 - 148)	4100 (161,42)	135 (149)	50 (1,97)	5 (0,20)	3600 (141,73)	200 (7,87)	10 (0,39)	180 (7,09)	Motorized	800 (31,50)	500 (19,69)	250 (9,84)	350 (13,78)	1000 (39,37)
4100 - 175 (13,45 - 192)	4100 (161,42)	175 (193)	50 (1,97)	5 (0,20)	3600 (141,73)	200 (7,87)	10 (0,39)	192 (7,56)	Motorized	800 (31,50)	500 (19,69)	250 (9,84)	350 (13,78)	1000 (39,37)
4100 - 220 (13,45 - 242)	4100 (161,42)	220 (242)	80 (3,15)	8 (0,31)	3600 (141,73)	197 (7,76)	10 (0,39)	174 (6,85)	Motorized	800 (31,50)	500 (19,69)	250 (9,84)	350 (13,78)	1000 (39,37)
4100 - 260 (13,45 - 286)	4100 (161,42)	260 (286)	110 (4,33)	10 (0,39)	3600 (141,73)	165 (6,50)	9,5 (0,37)	129 (5,08)	Motorized	800 (31,50)	500 (19,69)	250 (9,84)	350 (13,78)	1000 (39,37)
4270 - 135 (14 - 148)	4270 (168,11)	135 (149)	50 (1,97)	5 (0,20)	3780 (148,82)	200 (7,87)	10 (0,39)	180 (7,09)	Motorized	800 (31,50)	500 (19,69)	250 (9,84)	350 (13,78)	1000 (39,37)
4270 - 175 (14 - 192)	4270 (168,11)	175 (193)	50 (1,97)	5 (0,20)	3780 (148,82)	200 (7,87)	10 (0,39)	192 (7,56)	Motorized	800 (31,50)	500 (19,69)	250 (9,84)	350 (13,78)	1000 (39,37)
4270 - 220 (14 - 242)	4270 (168,11)	220 (242)	80 (3,15)	8 (0,31)	3780 (148,82)	197 (7,76)	10 (0,39)	174 (6,85)	Motorized	800 (31,50)	500 (19,69)	250 (9,84)	350 (13,78)	1000 (39,37)
4270 - 260 (14 - 286)	4270 (168,11)	260 (286)	110 (4,33)	10 (0,39)	3780 (148,82)	165 (6,50)	9,5 (0,37)	129 (5,08)	Motorized	800 (31,50)	500 (19,69)	250 (9,84)	350 (13,78)	1000 (39,37)

BACKGAUGE FINGER BLOCKS	NUMBER OF SHEET SUPPORT	OIL CAPACITY	MOTOR POWER	STROKE	DAYLIGHT	THROAT DEPTH	TABLE HEIGHT	TABLE WIDTH	LENGTH	HEIGHT	WIDTH	WEIGHT
				C	D	E	F	G	L	H	W	
amount	amount	lt. (us gallons)	kW (hp)	mm (inch)	mm (inch)	mm (inch)	mm (inch)	mm (inch)	mm (inch)	mm (inch)	mm (inch)	kg. (lbr.)
2	2	2x34,5 (2x,9,11)	2x10,4 (2x14,1)	275 (10,83)	530 (20,87)	410 (16,14)	900 (35,43)	90 (3,54)	4250 (167,32)	2900 (114,17)	2250 (88,58)	6273 (13832)
2	2	2x34,5 (2x,9,11)	2x10,4 (2x14,1)	275 (10,83)	550 (21,65)	410 (16,14)	900 (35,43)	90 (3,54)	4250 (167,32)	2900 (114,17)	2250 (88,58)	7673 (16919)
2	2	2x34,5 (2x,9,11)	2x10,4 (2x14,1)	275 (10,83)	530 (20,87)	410 (16,14)	900 (35,43)	90 (3,54)	4250 (167,32)	2900 (114,17)	2250 (88,58)	6786 (14963)
2	2	2x34,5 (2x,9,11)	2x10,4 (2x14,1)	275 (10,83)	550 (21,65)	410 (16,14)	900 (35,43)	90 (3,54)	4750 (187,01)	2900 (114,17)	2250 (88,58)	8186 (18050)
2	2	2x55 (2x,14,5)	2x15,3 (2x,20,8)	275 (10,83)	550 (21,65)	410 (16,14)	900 (35,43)	90 (3,54)	4950 (194,88)	3000 (118,11)	2350 (92,52)	9086 (20035)
2	2	2x55 (2x,14,5)	2x15,3 (2x,20,8)	275 (10,83)	550 (21,65)	410 (16,14)	900 (35,43)	200 (7,87)	5000 (196,85)	3000 (118,11)	2500 (98,43)	11286 (24886)
2	2	2x55 (2x,14,5)	2x15,3 (2x,20,8)	275 (10,83)	550 (21,65)	410 (16,14)	900 (35,43)	220 (8,66)	5000 (196,85)	3100 (122,05)	2600 (102,36)	13886 (30619)
2	2	2x34,5 (2x,9,11)	2x10,4 (2x,14,1)	275 (10,83)	550 (21,65)	410 (16,14)	900 (35,43)	90 (3,54)	5400 (196,85)	2900 (114,17)	2250 (88,58)	9600 (21167)
2	2	2x55 (2x,14,5)	2x15,3 (2x,20,8)	275 (10,83)	550 (21,65)	410 (16,14)	900 (35,43)	90 (3,54)	5600 (220,47)	3000 (118,11)	2350 (92,52)	10106 (22284)
2	2	2x55 (2x,14,5)	2x15,3 (2x,20,8)	275 (10,83)	550 (21,65)	410 (16,14)	900 (35,43)	160 (6,30)	5650 (222,44)	3000 (118,11)	2500 (98,43)	12906 (28452)
2	2	2x55 (2x,14,5)	2x15,3 (2x,20,8)	275 (10,83)	550 (21,65)	410 (16,14)	900 (35,43)	200 (7,87)	5650 (222,44)	3100 (122,05)	2600 (102,36)	16100 (35494)
2	2	2x34,5 (2x,9,11)	2x10,4 (2x,14,1)	275 (10,83)	550 (21,65)	410 (16,14)	900 (35,43)	90 (3,54)	5750 (226,38)	2900 (114,17)	2250 (88,58)	10964 (24171)
2	2	2x55 (2x,14,5)	2x15,3 (2x,20,8)	275 (10,83)	550 (21,65)	410 (16,14)	900 (35,43)	90 (3,54)	5950 (234,25)	3000 (118,11)	2350 (92,52)	11414 (25163)
2	2	2x55 (2x,14,5)	2x15,3 (2x,20,8)	275 (10,83)	550 (21,65)	410 (16,14)	900 (35,43)	160 (6,30)	6000 (236,22)	3000 (118,11)	2500 (98,43)	13414 (29572)
2	2	2x55 (2x,14,5)	2x15,3 (2x,20,8)	275 (10,83)	550 (21,65)	410 (16,14)	900 (35,43)	200 (7,87)	6000 (236,22)	3100 (122,05)	2600 (102,36)	17014 (37509)
2	2	2x34,5 (2x,9,11)	2x10,4 (2x,14,1)	275 (10,83)	550 (21,65)	410 (16,14)	900 (35,43)	90 (3,54)	5950 (234,25)	2900 (114,17)	2250 (88,58)	11269 (24843)
2	2	2x55 (2x,14,5)	2x15,3 (2x,20,8)	275 (10,83)	550 (21,65)	410 (16,14)	900 (35,43)	90 (3,54)	6100 (240,15)	3000 (118,11)	2350 (92,52)	12500 (27557)
2	2	2x55 (2x,14,5)	2x15,3 (2x,20,8)	275 (10,83)	550 (21,65)	410 (16,14)	900 (35,43)	160 (6,30)	6200 (244,09)	3000 (118,11)	2500 (98,43)	14919 (32890)
2	2	2x55 (2x,14,5)	2x15,3 (2x,20,8)	275 (10,83)	550 (21,65)	410 (16,14)	900 (35,43)	200 (7,87)	6200 (244,09)	3100 (122,05)	2600 (102,36)	17500 (38580)

# SPEED BEND PRO

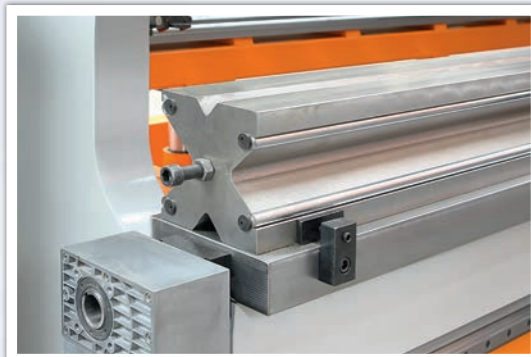
Hydraulic  
Press Brake



## Increase Your Performance !

Production times are the most important profit factor for businesses. Speed Bend Pro series press brakes are manufactured to reduce unit time costs and to become your most important supporting power in your business with their fast and high quality production capability in a competitive environment. The range of motion of the upper beam and the beam-mouth opening have been increased in the Speed Bend Pro series. Therefore, it is extremely easy to obtain deep bends by using longer dies. It is possible to easily remove the bent parts from the front of the machine and to bend the long skirted Z-type parts easily by using high lower dies.

Designed with high safety standards, the machine is equipped with laser finger protection and body protection light curtain. Oil cooler feature is offered as standard in SPEED BEND PRO series of 400 tons and above.



### STANDARD BACKGAUGE REST AXES

It provides both time and cost savings thanks to its ability to perform complex bending easily with its standard 4-axis back rest (X, R, Z1, Z2) and other accessories that assist bending.



### LOW OPERATING COST

Provides minimal energy consumption. Cylinders and hydraulic installations that provide easy maintenance are used. Thus, maintenance needs are kept at minimum. This way, the machine offers low operating costs.

### QUICK PAY OFF

With its speed and versatility, it is a profitable investment and can pay off for itself in a short time.

### PRECISION PROGRAMMING

Fast, easy, error-free, and precise programming is possible thanks to the linear rulers produced at high quality standards in special production facilities.

### PRECISION BENDING

Thanks to the standard motorized crowning system, the deflection balance can be ideally achieved with the motor. Thus, precise bends are obtained.

### SLIDING FRONT SUPPORT ARMS

Sliding front support arms with stopper, scaled according to the metric system, allows more precise and easier bending operations.





# SPEED BEND PRO

## GENERAL SPECIFICATIONS

### STANDARD EQUIPMENT

- Steel body with mono bloc welding of ST44 material which is rigid against bending and high tension
- 6 axes (Y1, Y2, X, R, Z1, Z2)
- HAWE hydraulic system
- CNC controlled motorized crowning system
- Top and bottom tools with machined and hardened parts (835 mm length)
- Easy clamping top tool holder system
- Control units; ER TOUCH, DELEM 66T, ER99, CYBELEC MODEVA 19T, ESA S660 W
- 3D graphics color display and offline software
- Electrical panel designed and manufactured from SIEMENS electrical and automation products in accordance with the CE regulations
- Backlight protection
- Switch side protection covers
- Y1+Y2 axis synchronization with a tolerance of 0.01 provided by linear scales
- CE compliant foot pedal
- Sliding front support arms with T slot and mm/inch scale
- 410 mm throat depth (60 - 320 tons)
- Led light enclosures

### OPTIONAL EQUIPMENT

- Control units; ER TOUCH, Delem 69T, CYBELEC MODEVA RA PREMIUM
- 4,5,6 axis backgauge options
- LEUZE light protection system
- AKAS LASER finger protection system
- DSP MCS AP photo electric laser front protection
- Laser angle measurement system
- Hydraulic and hydro-dynamic crowning systems (Manual crowning, motorized crowning, hydro-mechanical crowning, hydraulic crowning, hydro-dynamic crowning)
- Pneumatic top tool holder system
- Hydraulic top and bottom tool holder systems
- CNC controlled automatic bend sheet support arms (AP3+AP4 axes)
- Hydraulic oil cooling and heating systems
- Electric panel heating and cooling system
- Special throat depths (500, 600 and 750 mm and above)
- Special top and bottom tools
- Tool storage cabinet
- Back closed cage
- Rear shutter
- Led bar

· **PRECISION BENDING**

· **SWIFT MAINTENANCE**

· **STREAMLINED OPERATIONS**



# POWER BEND PRO

Hydraulic  
Press Brake



350 - ... - 510  
throat depth

Standard 3 axes  
Y1, Y2, X

High speed cycle  
(180 - 10 - 135 mm/s)

1 - ... - 6 m length  
options

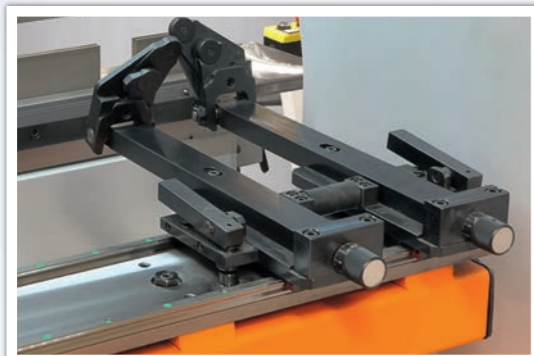
40 - ... - 400 ton  
capacity options

170 - ... - 375 strokes  
387 - ... - 650 daylight  
options



## The Perfect Combination of Speed and Power

Power-Bend Pro Series, which has been redesigned according to the current needs of our users, has reached a unique structure with its electronic and mechanical hardware that offers excellent results in standard, stainless, thin, and thick sheets. Power-Bend Pro Series Press Brakes, which achieve high production speeds by keeping the production costs of your business at a minimum, are among the most preferred models with their user-friendly CNC control panels and low-maintenance hydraulic systems. Motorized crowning system is offered in tonnages in the range of 260-320, and both motorized ridging and oil cooling capability are offered in tonnages of 400 and above. Power-Bend Pro, where design and technology unites; will become an economical and permanent solution for your business in narrow, wide, complex, and precision bending operations, in single or mass productions that require high speed.



### REMOTE ACCESS

With the remote service support, the problems of customers from all over the world are resolved quickly, providing time and cost savings.

### TOUCHSCREEN

Models can be viewed realistically on the screen with the 3D feature of the controller. Thus, it provides the operator with the ability to distinguish objects from each other and ease of application.

### QUICK AND EASY DIE REPLACEMENT

The die can be replaced without the need for an extra key for the standard promecams used in the machine.

### FRONT SUPPORT ARMS

Sliding front support arms with stoppers that move by means of linear rails and trolleys are your closest assistant.

### RIGID UPPER BEAM WITH PRECISELY POSITIONED BEARINGS

It is possible to obtain precise bending thanks to the rigid upper beam with a bending precision of 0.01 mm on bearings from 12 points.

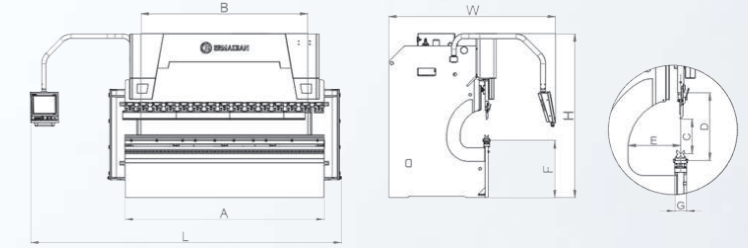
### EASY MAINTENANCE

It is extremely easy to access the accessories on it with its structure that allows both functionality and aesthetic appearance in design. With low maintenance hydraulic systems, the maintenance times are reduced to a minimum.



# POWER BEND PRO

## TECHNICAL FEATURES



TYPE	BENDING LENGTH	BENDING POWER	DISTANCE BETWEEN COLUMNS	Y RAPID SPEED	Y WORKING SPEED	Y RETURN SPEED	CROWNING	TRAVEL IN X AXIS	SPEED OF X AXIS	BACKGAUGE FINGER BLOCKS	NUMBER OF SHEET SUPPORT
	A		B								
	mm (inch)	Ton (tons)	mm (inch)	mm/s (inch/s)	mm/s (inch/s)	mm/s (inch/s)	standard	mm (inch)	mm/s (inch/s)	amount	amount
PB PRO 1270-40 (4,17'-44)	1270 (50)	40 (44)	1050 (41,3)	140 (5,51)	10 (0,39)	170 (6,69)	-	800 (31,5)	230 (9,1)	2	2
PB PRO 1270-60 (4,17'-66)	1270 (50)	60 (66)	1000 (39,4)	160 (6,30)	10 (0,39)	165 (6,50)	-	800 (31,5)	230 (9,1)	2	2
PB PRO 2100-40 (6,89'-44)	2100 (83)	40 (44)	1700 (66,9)	140 (5,51)	10 (0,39)	170 (6,69)	-	800 (31,5)	230 (9,1)	2	2
PB PRO 2100-60 (6,89'-66)	2100 (83)	60 (66)	1700 (66,9)	160 (6,30)	10 (0,39)	165 (6,50)	-	800 (31,5)	230 (9,1)	2	2
PB PRO 2600-60 (8,53'-66)	2600 (102)	60 (66)	2200 (86,6)	200 (7,87)	10 (0,39)	165 (6,50)	-	800 (31,5)	230 (9,1)	2	2
PB PRO 2600-100 (8,53'-110)	2600 (102)	100 (110)	2200 (86,6)	200 (7,87)	9,5 (0,37)	155 (6,10)	-	800 (31,5)	230 (9,1)	2	2
PB PRO 2600-135 (8,53'-149)	2600 (102)	135 (149)	2200 (86,6)	160 (6,30)	10 (0,39)	120 (4,72)	-	800 (31,5)	230 (9,1)	2	2
PB PRO 3100-100 (10,17'-110)	3100 (122)	100 (110)	2600 (102,4)	200 (7,87)	9,5 (0,37)	155 (6,10)	-	800 (31,5)	230 (9,1)	2	2
PB PRO 3100-135 (10,17'-149)	3100 (122)	135 (149)	2600 (102,4)	200 (7,87)	10 (0,39)	120 (4,72)	-	800 (31,5)	230 (9,1)	2	2
PB PRO 3100-175 (10,17'-193)	3100 (122)	175 (193)	2600 (102,4)	180 (7,09)	10 (0,39)	135 (5,31)	-	800 (31,5)	230 (9,1)	2	2
PB PRO 3100-220 (10,17'-242)	3100 (122)	220 (242)	2600 (102,4)	180 (7,09)	10 (0,39)	160 (6,30)	-	800 (31,5)	230 (9,1)	2	2
PB PRO 3100-260 (10,17'-286)	3100 (122)	260 (286)	2600 (102,4)	140 (5,51)	10 (0,39)	135 (5,31)	Manual	800 (31,5)	230 (9,1)	2	2
PB PRO 3100-320 (10,17'-352)	3100 (122)	320 (352)	2600 (102,4)	140 (5,51)	10 (0,39)	150 (5,91)	Manual	800 (31,5)	230 (9,1)	2	2
PB PRO 3100-400 (10,17'-440)	3100 (122)	400 (440)	2550 (100,4)	110 (4,33)	8,4	130 (5,12)	Motorized	1000 (39,4)	230 (9,1)	2	2
PB PRO 3760-175 (12,34'-193)	3760 (148)	175 (193)	3250 (128,0)	180 (7,09)	10 (0,39)	135 (5,31)	-	800 (31,5)	230 (9,1)	2	2
PB PRO 3760-220 (12,34'-242)	3760 (148)	220 (242)	3250 (128,0)	180 (7,09)	10 (0,39)	160 (6,30)	-	800 (31,5)	230 (9,1)	2	2
PB PRO 3760-320 (12,34'-352)	3760 (148)	320 (352)	3250 (128,0)	140 (5,51)	10 (0,39)	150 (5,91)	Manual	800 (31,5)	230 (9,1)	2	2
PB PRO 4100-135 (13,45'-149)	4100 (161)	135 (149)	3600 (141,7)	200 (7,87)	10 (0,39)	120 (4,72)	-	800 (31,5)	230 (9,1)	2	2
PB PRO 4100-175 (13,45'-193)	4100 (161)	175 (193)	3600 (141,7)	180 (7,09)	10 (0,39)	135 (5,31)	-	800 (31,5)	230 (9,1)	2	2
PB PRO 4100-220 (13,45'-242)	4100 (161)	220 (242)	3600 (141,7)	180 (7,09)	10 (0,39)	160 (6,30)	-	800 (31,5)	230 (9,1)	2	2
PB PRO 4100-260 (13,45'-286)	4100 (161)	260 (286)	3600 (141,7)	140 (5,51)	10 (0,39)	135 (5,31)	Manual	800 (31,5)	230 (9,1)	2	2
PB PRO 4100-320 (13,45'-352)	4100 (161)	320 (352)	3600 (141,7)	140 (5,51)	10 (0,39)	150 (5,91)	Manual	800 (31,5)	230 (9,1)	2	2
PB PRO 4100-400 (13,45'-440)	4100 (161)	400 (440)	3550 (139,8)	110 (4,33)	8,4 (0,33)	130 (5,12)	Motorized	1000 (39,4)	230 (9,1)	2	2
PB PRO 4270-135 (14,01'-149)	4270 (168)	135 (149)	3780 (148,8)	200 (7,87)	10 (0,39)	120 (4,72)	-	800 (31,5)	230 (9,1)	2	2
PB PRO 4270-175 (14,01'-193)	4270 (168)	175 (193)	3780 (148,8)	180 (7,07)	10 (0,39)	135 (5,31)	-	800 (31,5)	230 (9,1)	2	2
PB PRO 4270-220 (14,01'-242)	4270 (168)	220 (242)	3780 (148,8)	180 (7,07)	10 (0,39)	160 (6,30)	-	800 (31,5)	230 (9,1)	2	2
PB PRO 4270-400 (14,01'-440)	4270 (168)	400 (440)	3780 (148,8)	110 (4,33)	8,4 (0,33)	130 (5,12)	Motorized	1000 (39,4)	230 (9,1)	2	2
PB PRO 6100-220 (20,01'-242)	6100 (240)	220 (242)	5100 (200,8)	130 (5,12)	10 (0,39)	125 (4,92)	-	800 (31,5)	230 (9,1)	4	4
PB PRO 6100-320 (20,01'-352)	6100 (240)	320 (352)	5100 (200,8)	80 (3,15)	10 (0,39)	75 (2,95)	Motorized	800 (31,5)	230 (9,1)	4	4
PB PRO 6100-400 (20,01'-440)	6100 (240)	400 (440)	5100 (200,8)	80 (3,15)	8,4 (0,33)	65 (2,26)	Motorized	1000 (39,4)	230 (9,1)	4	4

OIL CAPACITY	MOTOR POWER	STROKE	DAYLIGHT	THROAT DEPTH	TABLE HEIGHT	TABLE WIDTH	LENGTH	HEIGHT	WIDTH	WEIGHT
		C	D	E	F	G	L	H	W	
lt. (us gallons)	kW (hp)	mm (inch)	mm (inch)	mm (inch)	mm (inch)	mm (inch)	mm (inch)	mm (inch)	mm (inch)	kg. (lbr.)
80 (21,1)	5,5 (7,4)	170 (6,7)	387 (15,2)	350 (13,8)	850 (33,5)	90 (3,54)	2900 (114,2)	2200 (86,6)	1900 (74,8)	3050 (6725)
150 (39,6)	7,5 (10,1)	275 (10,8)	530 (20,9)	410 (16,1)	900 (35,4)	90 (3,54)	3200 (126,0)	2600 (102,4)	2500 (98,4)	4150 (9151)
80 (21,1)	5,5 (7,4)	170 (6,7)	387 (15,2)	350 (13,8)	850 (33,5)	90 (3,54)	3600 (141,7)	2200 (86,6)	2000 (81,59)	3700 (8159)
150 (39,6)	7,5 (10,1)	275 (10,8)	530 (20,9)	410 (16,1)	900 (35,4)	90 (3,54)	3800 (149,6)	2600 (102,4)	2500 (98,4)	4900 (10805)
150 (39,6)	7,5 (10,1)	275 (10,8)	530 (20,9)	410 (16,1)	900 (35,4)	90 (3,54)	4500 (177,2)	2600 (102,4)	2500 (98,4)	5500 (12128)
150 (39,6)	7,5 (10,1)	275 (10,8)	530 (20,9)	410 (16,1)	900 (35,4)	90 (3,54)	4500 (177,2)	2600 (102,4)	2400 (94,5)	6000 (13230)
200 (52,8)	11 (14,8)	275 (10,8)	550 (21,7)	410 (16,1)	900 (35,4)	90 (3,54)	4300 (169,3)	2800 (110,2)	2600 (102,4)	7400 (16317)
150 (39,6)	7,5 (10,1)	275 (10,8)	530 (20,9)	410 (16,1)	900 (35,4)	90 (3,54)	5000 (196,9)	2600 (102,4)	2400 (94,5)	6500 (14333)
200 (52,8)	11 (14,8)	275 (10,8)	550 (21,7)	410 (16,1)	900 (35,4)	90 (3,54)	4800 (189,0)	2800 (110,2)	2600 (102,4)	7900 (17420)
200 (52,8)	15 (20,1)	275 (10,8)	550 (21,7)	410 (16,1)	900 (35,4)	90 (3,54)	4800 (189,0)	2800 (110,2)	2600 (102,4)	8800 (19404)
300 (79,3)	18,5 (24,8)	275 (10,8)	550 (21,7)	410 (16,1)	900 (35,4)	200 (7,87)	4800 (189,0)	2800 (110,2)	2600 (102,4)	11000 (24255)
300 (79,3)	22 (29,5)	275 (10,8)	550 (21,7)	410 (16,1)	900 (35,4)	220 (8,66)	5000 (196,9)	3100 (122,0)	2600 (102,4)	13600 (29988)
400 (105,7)	30 (40,2)	375 (14,8)	650 (25,6)	410 (16,1)	900 (35,4)	240 (9,45)	5150 (202,8)	3400 (133,9)	2650 (104,3)	16800 (37044)
400 (105,7)	30 (40,2)	375 (14,8)	650 (25,6)	510 (20,1)	1000 (39,4)	240 (9,45)	5000 (196,9)	3600 (141,7)	2800 (110,2)	20840 (45952)
200 (52,8)	15 (20,1)	275 (10,8)	550 (21,7)	410 (16,1)	900 (35,4)	90 (3,54)	5500 (216,5)	2800 (110,2)	2600 (102,4)	9800 (21609)
300 (79,3)	18,5 (24,8)	275 (10,8)	550 (21,7)	410 (16,1)	900 (35,4)	160 (6,30)	5400 (212,6)	2800 (110,2)	2600 (102,4)	12600 (27783)
400 (105,7)	30 (40,2)	375 (14,8)	650 (25,6)	410 (16,1)	900 (35,4)	220 (8,66)	5800 (228,3)	3400 (133,9)	2650 (104,3)	20000 (41100)
200 (52,8)	11 (14,8)	275 (10,8)	550 (21,7)	410 (16,1)	900 (35,4)	90 (3,54)	5800 (228,3)	2800 (110,2)	2600 (102,4)	10650 (23483)
200 (52,8)	15 (20,1)	275 (10,8)	550 (21,7)	410 (16,1)	900 (35,4)	90 (3,54)	5800 (228,3)	2800 (110,2)	2600 (102,4)	11100 (24476)
300 (79,3)	18,5 (24,8)	275 (10,8)	550 (21,7)	410 (16,1)	900 (35,4)	160 (6,30)	5800 (228,3)	2900 (114,2)	2600 (102,4)	13100 (28886)
300 (79,3)	22 (29,5)	275 (10,8)	550 (21,7)	410 (16,1)	900 (35,4)	200 (7,87)	5900 (232,3)	3100 (122,0)	2600 (102,4)	16700 (36824)
400 (105,7)	30 (40,2)	375 (14,8)	650 (25,6)	410 (16,1)	900 (35,4)	220 (8,66)	6150 (242,1)	3400 (133,9)	2650 (104,3)	21750 (47959)
400 (105,7)	30 (40,2)	375 (14,8)	650 (25,6)	510 (20,1)	1000 (39,4)	240 (9,45)	6000 (236,2)	3600 (141,7)	2900 (114,2)	26330 (58058)
200 (52,8)	11 (14,8)	275 (10,8)	550 (21,7)	410 (16,1)	900 (35,4)	90 (3,54)	6000 (236,2)	2800 (110,2)	2600 (102,4)	10950 (24145)
200 (52,8)	15 (20,1)	275 (10,8)	550 (21,7)	410 (16,1)	900 (35,4)	90 (3,54)	6000 (236,2)	2800 (110,2)	2600 (102,4)	12350 (27232)
300 (79,3)	18,5 (24,8)	275 (10,8)	550 (21,7)	410 (16,1)	900 (35,4)	160 (6,30)	6000 (236,2)	2900 (114,2)	2600 (102,4)	14600 (32193)
400 (105,7)	30 (40,2)	375 (14,8)	650 (25,6)	510 (20,1)	1000 (39,4)	240 (9,45)	6100 (240,2)	3600 (141,7)	2900 (114,2)	26550 (58543)
300 (79,3)	18,5 (24,8)	275 (10,8)	550 (21,7)	410 (16,1)	1100 (43,3)	180 (7,09)	7500 (295,3)	3500 (137,8)	2600 (102,4)	24800 (54684)
400 (105,7)	30 (40,2)	375 (14,8)	650 (25,6)	410 (16,1)	1100 (43,3)	180 (7,09)	7900 (311,0)	3900 (153,5)	2650 (104,3)	30900 (68135)
400 (105,7)	30 (40,2)	375 (14,8)	650 (25,6)	510 (20,1)	1100 (43,3)	200 (7,87)	7500 (295,3)	4000 (157,5)	2900 (114,2)	39700 (87539)

# POWER BEND PRO

## GENERAL SPECIFICATIONS

### STANDARD EQUIPMENT

- Sliding front arms that is height-adjustable and with scale
- Handened and grinded top an bottom tools
- Promecam fast tool clamping system
- Control units; ER TOUCH, DELEM DA-52S, CYBELEC CYBTOUCH 12, ESA S630
- 800 mm strong backgauge with CNC control single-axis
- 410 mm throat depth (60 - 320 tons)
- 2 axes backgauge finger
- Metric and inch scale
- Crowning system in the lower beam (manual crowning system in 3100/.../4100-260 and 3100/.../4100-320, motorized crowning system in machines over 3100-400 tons) is standard
- Movable foot pedal convenient for single and serial bending in compliance with the CE norm
- Front protection light curtain, side protection doors + switch and rear protection light curtain
- Top beam and cylinder covers are renewed with led light
- Different electrical voltage options according to the country where the machine will be operated

### OPTIONAL EQUIPMENT

- Special stroke and special throat depth options that provide advantage to the user in deep bendings
- Control units; ER TOUCH, DELEM ER70, DELEM DA-58T, CYBELEC MODEVA PAC, ESA S640, STEPER77
- Optional backgauge stroke added backgauge fingers
- Motorized crowning systems
- Hydraulic oil cooling and heating system
- Electric panel heating and cooling system
- Segmented top and bottom tools
- Optional table width or bottom die V opening option
- Tools for box or pole bending
- Laser front protection options
- Electric panel, oil tank and controller case can be heated and cooled optionally
- Optional top and bottom tool holder
- Tool storage cabinet
- Automatic slide lubrication system that extends the lifetime of the sliding system
- U-Type dies for thick material bending
- Front support arms with additional movement to eliminate the stretching formed in thin materials
- Special machine production according to sheet length and thickness depending on demand
- AP3/AP4 motorized front sheet support system and parking place for reverse bending
- Control panel and/or electricity panel are mountable to the right side of the machine according to the demand of the customer
- Back sheet support system
- Sheet extraction system
- Pneumatic-finger backgauge system
- Back closed cage
- Rear shutter

· **POWERFUL BENDS**

· **PRECISE PERFORMANCE**

· **SAFETY MAXIMIZED**



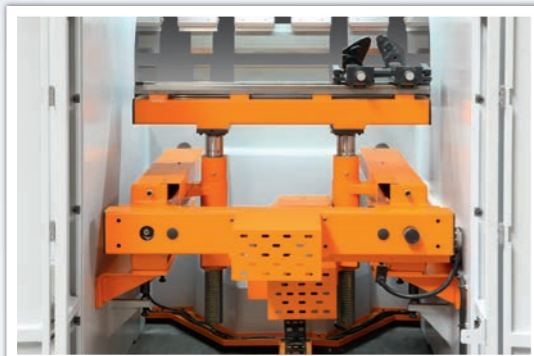
# POWER BEND ST

Hydraulic  
Press Brake



## Enjoy Bending From Your Seat !

It is the perfect solution for our customers working with small and thin parts up to 1.27 meters, offering advantages in both cost and working area. Seating area with knee gap, working desk, height adjustable CNC pendant arm with shock absorber and lighting systems have been designed with ergonomics in mind. In addition to the adjustable seat and controller arm, the lighting system in the machine body is also a part of the ergonomic system. Working in dim light all day can cause strain on the eyes, headaches, and mental and muscle fatigue. Therefore, it is aimed to provide a comfortable and ergonomic working environment to the operator, and efficiency in production.



### **FBSS (Faster Bends Safety System)**

Serial bending processes without using a foot pedal speeds up your production process and saves you time and money while increasing your productivity.

### **ERGONOMIC DESIGN**

Maximum comfort of the operator was considered with the knee space opening to the lower beam, wide working desk, comfortable seat, and lighting system.

### **REMOTE ACCESS**

With the remote service support, the problems of customers from all over the world are resolved quickly, providing time and cost savings.



# MICRO BEND

Hydraulic  
Press Brake



40 tons of bending force

1000 mm bending length

Double foot pedal

Ergonomic design

Standard 3 axes  
Y1, Y2 and X

Front support arms

## Don't Have Enough Space to Use ?

Let us offer you Micro-Bend, the most efficient and smallest Hydraulic Press Brake of its class. Standing out with its low investment cost, ergonomic design, and high efficiency; Micro-Bend single axis backgauge has the capacity to bend 5 mm black steel sheet full length with 1 m x 40 tons of press power.



### **SIMPLE OPERATION**

It provides the opportunity to perform small, simple bends with maximum efficiency.

### **MASS PRODUCTION WITH LOW STROKE**

The low stroke feature minimizes the times without any bending operation. Therefore, it increases the productivity of your business.

### **COMPACT MACHINE**

Although it is small, it is a very useful machine with maximum efficiency and many features.



# ECO BEND EXPERT

Hydraulic  
Press Brake





## An Affordable Solution...

While being user-friendly with both standard and optional hardware features, CNC Hydraulic Press Brake Eco-Bend makes your investments profitable with the economic power it adds to your business. Eco-Bend offers its user a CNC control unit with a 2D graphic display and high programming capability as a standard. CNC Hydraulic Press Brake Eco-Bend will boost your business with its low investment cost, high efficiency, while also offering economical solutions.

Contributing to your budget with its low operating cost, it provides long-lasting use thanks to its monoblock body and strong rigid structure.



### ECONOMY CLASS

It offers a more cost-effective option by reducing the total investment cost without sacrificing from performance.

### QUICK AND EASY DIE REPLACEMENT

The die can be replaced without the need for an extra key for the standard promecams used in the machine.

### LOW OPERATING COST

Energy efficient motors are used. Low-maintenance, easy-to-maintain cylinders and hydraulic installations are used. Thus, the operation costs are lowered.

### QUICK PAY OFF

With its low price, it pays off for itself in a short time.

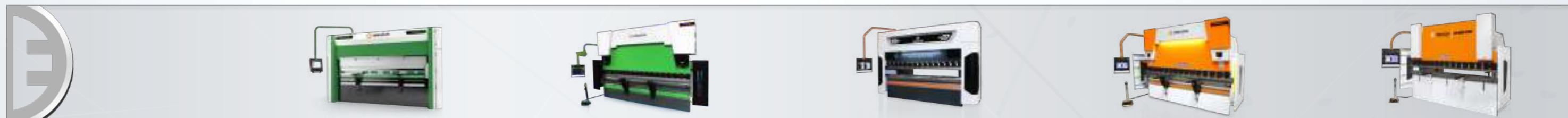
### 2D TOUCHSCREEN

The controller has a 12" 2D touchscreen.

### MONOBLOCK BODY

It can be used safely for many years thanks to its monoblock welded body.





	GREEN PRESS	EVO III	SPEED BEND PRO	POWER BEND PRO	ECO BEND EXPERT
Number of Standard Axes	6	6	6	3	3
Manual Crowning System	—	—	—	○	○
Motorised Crowning System	●	●	●	○	○
Hydraulic Crowning System	—	—	○	○	—
Hydro-Dyn Crowning System	—	—	○	○	—
Hydro-Mechanical Ridging	—	—	○	○	—
Akas / Leuze / DSP Front Protection	●	●	●	○	○
Lazer Safe Finger Protection	○	●	○	○	○
Side Cage + Switch	●	●	●	●	●
Backlight Protection	●	●	●	●	●
Rearguard + Switch	○	○	○	○	○
Motorized Shutter Door Rear Cover	○	○	○	○	○
Led Bar Guiding System	○	○	○	○	○
Laser Bend Line	○	○	○	○	○
Digital Angle Gauge	○	○	○	○	○
Angle Gauge - Iris Plus / Data M	○	○	○	—	—
Rear Sheet Support System	○	○	○	—	—
AP3 + AP4 Sheet Support System	○	○	○	—	—
Double Foot Pedal	●	●	●	●	●
Barcode Reader	○	○	○	—	—
Height Adjustable CNC Pendant Arm	●	●	●	●	●
Front Sliding Arms	○	○	○	○	○
Robot Interface	○	○	○	—	—
Start- Stop	●	●	●	●	●
Central Lubricating System	—	●	●	●	●
Electric Panel Heating - Cooling	○	○	○	○	○
Ruler On Top Beam	○	○	○	○	○

● Standard ○ Optional — Not used

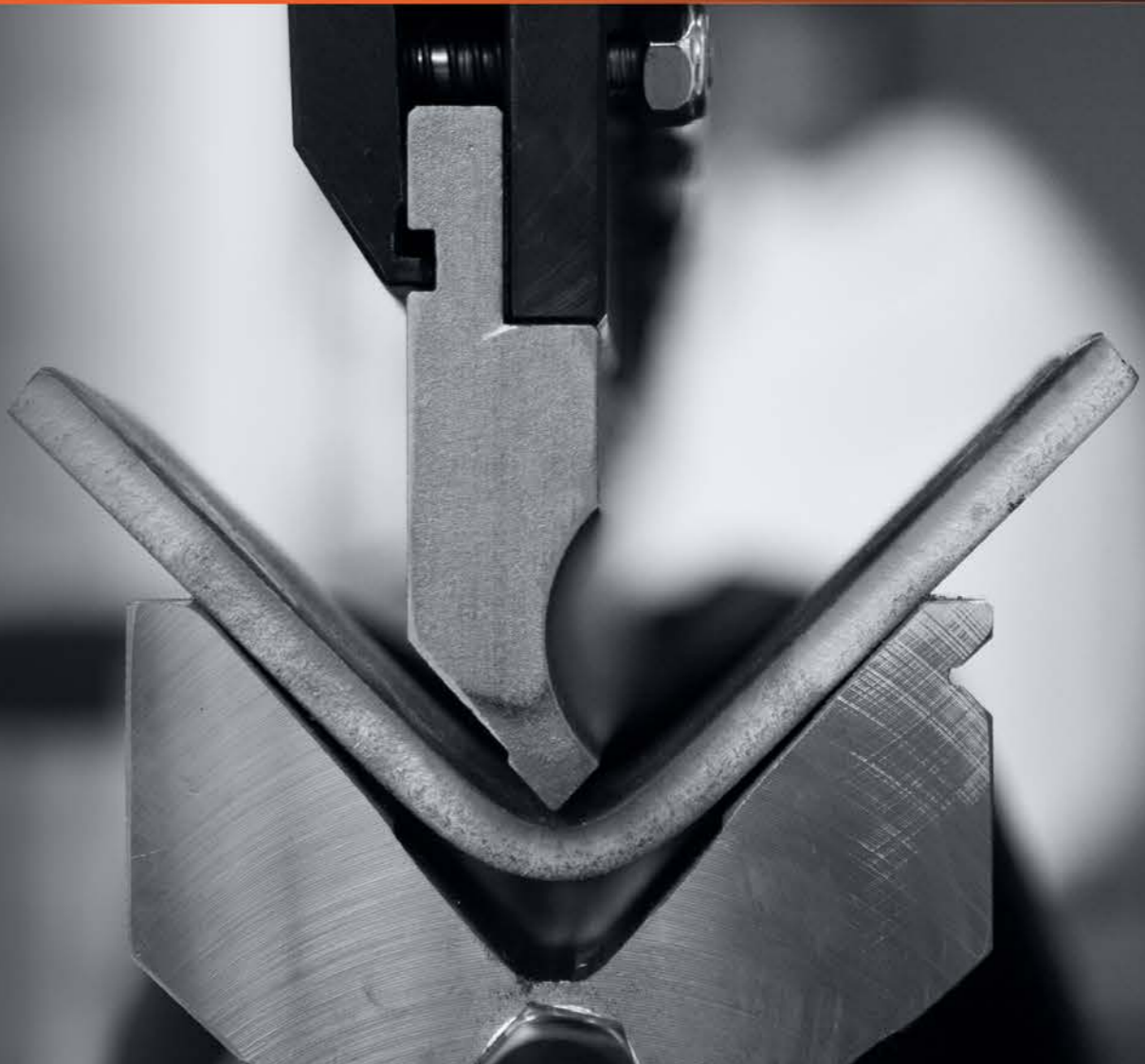


# EXPERIENCE

MORE THAN HALF  
A CENTURY

# HYRAULIC, ELECTRIC OR HYBRID

WHICH PRESS BRAKE  
DO YOU LIKE EVER



### LEUZE MLC510 BACK PROTECTION

The back protection light barrier stops the machine in case an object enters the rear of the machine during operation and ensures safety.



### SIDE CAGE+SWITCH+LEUZE (MLC100)

If the brackets used as front light protection detect an object in the beam movement, they stop the movement of the beam; if the beam is removed, the beam keeps moving at the same speed. However; if the object remains in between, the beam keeps moving at a low (manual) speed.



### SIDE CAGE+SWITCH+AKASII (AUTOMATIC)

AKAS finger protection stops the movement of the upper beam when an object is detected. If the object is moved out of the way, the jaw continues to move. Height adjustment is done manually.



### SIDE CAGE+SWITCH+AKASII (MANUAL)

AKAS finger protection stops the movement of the upper beam when an object is detected. If the object is moved out of the way, the jaw continues its movement. Once calibrated, it automatically adjusts the height when the upper mould is changed.



### SIDE CAGE+SWITCH+DSP AP MCS

DSP MCS AP stops the movement of the upper beam when an object is detected. The beam continues to move if the object is removed.



### SIDE CAGE+SWITCH+LAZER SAFE

The system, which is also used as front finger protection, stops the movement of the upper jaw when it detects any object.

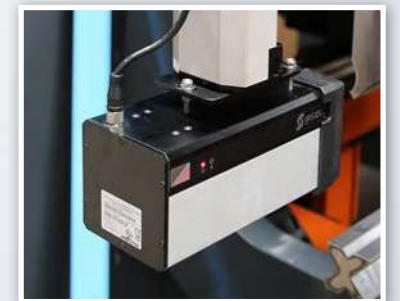
If the object is moved out of the way, the jaw movement continues. If the object continues to stand in the way, the jaw movement continues at a slow speed (manually).



### SIDE CAGE+SWITCH+LASERSAFE IRIS

The system, which is also used as a front finger protection, stops the movement of the upper beam when an object is detected.

If the object is moved out of the way, the jaw movement continues. If the object continues to stand in between, the jaw movement continues at slow speed (manually).



### MOTORIZED SHUTTER DOOR REAR COVER

A rear safety door that can be used with motors and manually, and has aluminium partitions, which are provided in anthracite grey and metallic grey colours.



### REARGUARD+SWITCH

Maximizes your safety thanks to the rear sliding cage and the switch. The windows allow you to check the inside of the machine.



### SLIDING TYPE REAR GUARD

With its cover that can be moved manually in a horizontal direction, It is a rear security protection door that can be optionally installed according to customer request, in both body color and orange color.



## LASER BEND LINE - B-LIGHT 01-02-03

This is a system utilized for bending without the use of backgauge with the help of laser beam, and that allows the bending axis to be clearly visible.



## KEBA DIGITAL ANGLE GAUGE

With KEBA angle measuring systems, complex bends can be performed extremely easily and with maximum accuracy. The first advantage of this system is allowing the bending of complex shapes easily and accurately within view, especially Z-bends or narrow parts. Complete quality control is possible with this system without any additional time and with maximum accuracy and reproducibility.



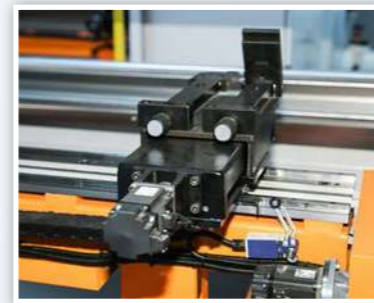
## MITUTOYO UNIVERSAL ANGLE GAUGE

- Can make your measurements more accurately with its sensitive adjustment.
- Can easily read measurements through a clear screen.
- Can easily transfer your measurement data to the controller with its Bluetooth feature and provide correction to the value to obtain more accurate results.
- When not active, it will turn itself off after 10 minutes and save up to 200 hours of battery.



## X5 BACKGAUGE TONGUE GROUP

X5 servo motorised back gauge tongue desired positioning accuracy of 0.05 mm according to geometry. The back gauge allows you to achieve precise bends. Backgauge one of the stop moves  $\pm 100$  mm itself to make conical bending.



## PNEUMATIC REAR SUPPORTS

This is the latch group that is additionally mounted for easy bending in the machine and can also operate pneumatically apart from the backgauge.



## SINGLE-AXIS BACKGAUGE

Backgauge single-axis (X) asynchronous motor and 0.05 mm positioning accuracy according to the desired geometry



## 2-AXIS BACKGAUGE

Backgauge with 2-axis (X, R) servo motor allows you to obtain precise bending of the backgauge with 0.05 mm positioning accuracy according to the desired geometry.



## 4-AXIS BACKGAUGE

Backgauge with 4-axis (X, R, Z1, Z2) servo motor allows you to obtain precise bending of the backgauge with 0.05 mm positioning accuracy according to the desired geometry.



## 5-AXIS BACKGAUGE

5 axis (X1, X2, R, Z1, Z2) servo motorised back gauge desired positioning accuracy of 0.05 mm according to geometry. The articulated type back gauge allows you to obtain precise bends. R, Z1, Z2 by angular movement of the gauge X1, X2 stroke used for conical bending.



## 6-AXIS BACKGAUGE ATF TYPE

ATF type backgauge system with 6-axis servo motor is automatically positioned for optimum bending results.

X1, X2, R1, R2, Z1, Z2 - 6 Axis ATF type back gauge system is an option that offers fast and precise work for maximum productivity.



### STANDARD CONTROLLER ARM

This is the standard equipment in which the CNC controller, which is required for the machine to work, is mounted and allows the controller to move to the front or back of the machine when required.



### HEIGHT ADJUSTABLE CNC PENDANT ARM

The height-adjustable CNC pendant arm with shock absorber stands out with its modern design and functional features.

This function is very practical when the machine is used by more than one operator and the height adjustment of the controller needs to be changed frequently. The controller can be easily moved up and down, left and right, forwards and backwards, providing a comfortable working environment for the operator.



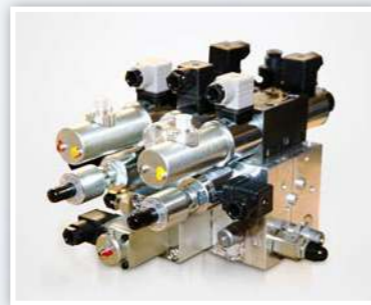
### ERGONOMIC CONTROLLER ARM

It is a control panel arm type that allows you to easily move left and right, back and forth, in order to be more compatible with the operator working on the machine.



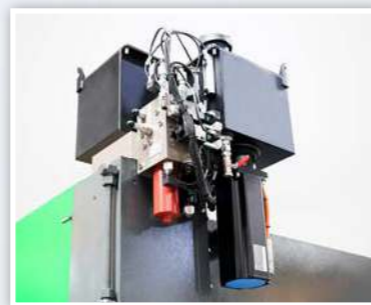
### HAWE HYDRAULIC SYSTEM

This system ensures that sufficient amount of oil required for the main rollers, pressing rollers, and feeler adjustment rollers circulates in the system at an accurate pressure.



### HAWE EPRAX HYDRAULIC SYSTEM

It has a special closed circuit hydraulic system for the EVO III hybrid press brake series. It requires minimum maintenance compared to hydraulic machines.



### FRONT SLIDING ARMS

Sliding front support arms with stopper, metric system scales and height adjustment feature allows more precise and easier bending operations.



### L TYPE SLIDING FRONT SUPPORT ARM

Sliding front support arms with height adjustment stoppers, sized in the metric system, allow you to make your bending processes more precise and easier.



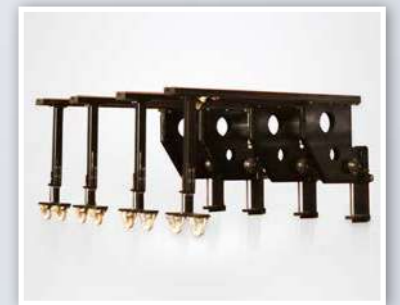
### U TYPE SLIDING FRONT SUPPORT ARM

It is the front arm body of all our machines (except Eco-Bend Expert), which is created using a light curtain and used for front security.



### WIDE TYPE FRONT SLIDING ARM

They are optional foot type front arms used in machines with high sheet width and special bending.



### AP3-AP4 FRONT SUPPORT ARMS SYSTEM

The sheet support system used where the plinth rates of the elastic fine sheets to be bended are bigger.

This system prevents deformation of the bent sheet due to the flexing of the skirt share. It also provides a comfortable and easy bending by lifting the sheet from the bottom by following the bending path.



## DOUBLE FOOT PEDAL

Double foot control pedal designed to ensure easy bending.



## TOOL STORAGE CABINET

This is a cabinet manufactured by Ermaksan to protect the upper and lower dies used in our machine from external impact, and to keep them clean.



## ROLLERI TOOL CABINET

This is a cabinet manufactured by Rollerli to protect the upper and lower dies in our machine from external impact, and to keep them clean.



## SHEET EXTRACTION SYSTEM

This is the system that helps the bent products to be removed from the table of the press brake and transferred to the next stage.



## RULER ON TOP BEAM

You can get precise results with Y1+Y2 axis synchronization with a tolerance of 0.01 provided by linear rulers.



## MOTORISED CROWNING SYSTEM

Thanks to the CNC-controlled motorized crowning system, the ideal deflection balance can be achieved with the motor. Thus, it ensures that every point of the bent part is at an equal bending angle.



## MANUAL CROWNING SYSTEM

The ideal deflection balance can be achieved with the manual crowning system that operates by manually turning the hand wheel. Thus, it ensures that every point of the bent part is at an equal bending angle.



## HYDRO-DYN CROWNING SYSTEM

Thanks to the CNC-controlled hydro-dynamic crowning system, it is possible to straighten with multiple hydraulic cylinders and a special measuring device (strain gauge), and thus achieve the ideal deflection balance by means of the force applied to the special lower beam. Thus, it ensures that every point of the bent part is at an equal bending angle.



## HYDRO-MECHANICAL RIDGING

Thanks to the CNC-controlled hydro-mechanical crowning system, it is possible to achieve the ideal deflection balance with a hydraulic cylinder. Thus, it ensures that every point of the bent part is at an equal bending angle.



## HYDRAULIC CROWNING SYSTEM

Thanks to the CNC-controlled hydraulic crowning system, with multiple hydraulic cylinders, it is possible to achieve the ideal deflection balance by means of the force applied to the special lower beam. Thus, it ensures that every point of the bent part is at an equal bending angle.



“Smart features help manufacturers minimize downtime, reduce waste, improve quality, increase output and optimize production processes. Thus helping to increase productivity”

## WILA SMART TOOL LOCATOR



This system determines the order of use of the partial dies, which are mounted on the upper beam in full length, and attached to the top tool holder, by means of laser beam.

## BARCODE READER



Facilitates the operator's intensive and complex work processes and prevents errors.

In order to facilitate work processes and prevent errors, the programme is loaded automatically by reading the code from the sheet or anywhere else. Thus, your production times are reduced and your productivity increases.



## START - STOP (+SOFT STARTER)



This is the STAR - TRIANGLE motor speed change that we use as an option. Ensures safer and easier speed change for the motor.

## LED BAR GUIDING SYSTEM



Shows the location of the bent pieces and bending stations with coloured LED bars.

## DATA-M LASER PROTRACTOR



Developed by Data M Engineering, it is a powerful solution for measuring bending angles in press brakes.

This is the semi-automatic laser-based bending angle measuring device enables the user to determine the exact bending angle for press brakes by a built-in semiconductor laser with line optics and the 1/3" CMOS-camera together with strain gauges – and it works contactlessly.

## IRIS PLUS LASER PROTRACTOR



Automatic angle measurement and automatic correction of bending angle

The IRIS Plus consists of a laser transmitter and receiver set mounted on the top beam of the press brake. The receiver unit includes a high-speed digital camera and image data processing system. This important device successfully performs real-time angle measurement and correction for the most demanding applications.



Lorem Ipsum

# BOOST YOUR PRODUCTIVITY WITH ROBOTICS

Explore our Integrated Robotic Bending solutions designed to streamline your production process and elevate your bending capabilities. Whether you're bending thin sheets or thick plates, our systems adapt to meet your diverse bending needs, offering versatility without compromise. Experience productivity like never before as robotics and bending seamlessly converge to redefine your production capabilities.



## Ready to Elevate Your Bending Operations?

Reach out to us today to discover how our robotic press brake automations can transform your bending operations. Our team of experts is standing by to help you find the ideal solution for your needs, empowering you to effortlessly meet the demands of today's fast-paced manufacturing environment.

## ERTOUCH 15 SMART

ERMAKSAN

· for Eco-Bend Expert & Power-Bend Pro



STANDARD		OPTIONAL
· Maximum 4 Axis	· Number of Material (20)	· User Defined System
· <b>2D Display and 2D Programming</b>	· <b>Number of Die and Punch (200)</b>	· <b>Keba Angle Protractor</b>
· Capacitive Touch Panel	· Hemming and Air Bending	· Barcode Reader
· <b>Windows 10 LTE</b>	· <b>Quick Help</b>	· <b>3rd Party Software Support</b>
· 256 GB Memory	· FMSC Safety System	· User Authorization System
· <b>2 USB Port</b>	· <b>DSP – MCS Safety System</b>	· <b>ER 4.0</b>
· 2D Display and 2D Programming Offline Software	· LazerSafe Safety System	· Remote Service System
· <b>Product and Bending Counters</b>	· <b>Remote Access and Diagnostics</b>	· <b>Mitutoyo Angle Protractor</b>
· Number of Products (600)	· 2 x GigE Ethernet	
· <b>Number of Bends (48)</b>		

## ERTOUCH 15 VISION

ERMAKSAN

· for Power-Bend Falcon



· in addition to ERTOUCH 15 SMART

STANDARD	OPTIONAL
· 3D Display and 2D Programming Offline Software	· User Authorization System
· <b>Multi-Touch Panel</b>	· <b>Keba Angle Protractor</b>
· DXF – DWG Tooling Import/Export	· Barcode Reader
· <b>Stationary Work</b>	· <b>3rd Party Software Support</b>
· Unlimited Number of Product	· ER 4.0
· <b>Unlimited Number of Materials</b>	· <b>Remote Service System</b>
· Unlimited Number of Tooling	· Mitutoyo Angle Protractor
· <b>Standard User Defined System</b>	· <b>Motorized Front Support (AP3 + AP4)</b>
· List – Graphic Mode	· Led Bar
· <b>Reporting System</b>	· <b>Robot Control</b>
· Maximum 12 Axis	

## ERTOUCH 21

ERMAKSAN

· for Speed-Bend Pro



· in addition to ERTOUCH 15 VISION

STANDARD	OPTIONAL
· 21,5" TFT monitor with 1920x1080 resolution	· Keba Angle Protractor
· <b>Up To 12 Axis Control</b>	· <b>Barcode Reader</b>
· 3D Import, Rendering, STEP-IGES Product Import	· 3rd Party Software Support
· <b>3D Display and 3D Programming Offline Software</b>	· <b>ER 4.0</b>
· DXF – DWG Product Import / Export	· Remote Service System
· <b>Automatic Tool Placement</b>	· <b>Mitutoyo Angle Protractor</b>
· Tool Segmantation System	· <b>Motorized Front Support (AP3 + AP4)</b>
· <b>Horn System</b>	· <b>Led Bar</b>
· Special Curved Rotating Dies Support	· <b>Robot Control</b>
· <b>Network Product Sharing</b>	
· User Authorization System	

## ER 99

STEP AUTOMATION



· ERMAKSAN CAD/CAM Metal Sheet Bending Simulation	· Ability to Add External Keyboard and Mouse
· <b>Ability to Select Automatically Defined Patterns for Bending</b>	· <b>Alphanumeric Multifunction Keyboard</b>
· Automatic Twist Sequence Search and Warping Control	· Tool and Part Acquisition as CAD File
· <b>Remote Support via TeamViewer</b>	· <b>Material Sampling for Precision Manufacturing</b>
· Up to 16 Axis Configuration	· Upload Images from Mobile Devices
· <b>Exporting Planar Lines to DXF File</b>	· <b>Sensor Interface and Display</b>
· Scheduled Maintenance Management for Continuous Efficiency	· Suitable for Industry 4.0

“Command Your CNC Machine Wirelessly”



Multi-Touch Screen  
 Offline Software  
 Customizable  
 Extensive Reporting  
 3D Simulation  
 Upgradable  
 User friendly Interface



DA-69S

DELEM

• 3D and 2D Graphic Touch Screen Programming Mode	• Programmable Material Specifications
• 3D and 2D Imaging in Simulation and Manufacturing	• Programmable Axis Speeds
• 24" high-resolution color TFT display	• Free Material Programming
• Fully Equipped Windows App	• Product and Tool Search Filters
• Profile-T3D Offline Software	• Millimeter / Inch, kN / Ton Selection
• 4 GB Memory	• Stock Counter
• Product and Tool Memory	• Graphic Tool Configuration
• USB flash Memory Drive	• Emergency Stop Button
• 2D and 3D Automatic Bending Sequence Calculation	• Graphical Product and Tool Selection



DA-66S

DELEM

• 3D(O) and 2D Graphic Touch Screen Programming Mode	• Programmable Material Specifications
• 2D+ and 2D Imaging in Simulation and Production	• Programmable Axis Speeds
• 24" high-resolution color TFT display	• Free Material Programming
• Fully Equipped Windows App	• Product and Tool Search Filters
• Profile-LT Offline Software	• Millimeter / Inch, kN / Ton Selection
• 4 GB Memory	• Stock Counter
• Product and Tool Memory	• Graphic Tool Configuration
• USB flash Memory Drive	• Emergency Stop Button
• 2D and 2D+ Automatic Bending Sequence Calculation	• Graphical Product and Tool Selection

## DA - 69T

DELEM



• 3D and 2D Graphic Touch Screen Programming Mode	• Programmable Material Properties
• 3D and 2D Imaging in Simulation and Manufacturing	• Programmable Axis Speeds
• 17" high-resolution color TFT display	• Free Material Programming
• Fully Equipped Windows or Linux App	• Product and Tool Search Filters
• Profile-T3D Offline Software	• Millimeter / Inch, kN / Ton Selection
• 2 GB Memory	• Stock Counter
• Product and Tool Memory 256 MB	• Graphic Tool Configuration
• USB flash memory support	• Emergency Stop Button
• Graphical Product and Tool Selection	• 2D and 3D Automatic Bending Sequence Calculation

## DA - 58T

DELEM



• Maximum 4 Axis	• Real Scale Product Programming and Display
• 2D Graphic Touch Screen Programming Mode	• Automatic Bending Sequence Calculation
• 15" high-resolution color TFT display	• Programmable Material Properties
• Bending Sequence Calculation	• Product and Tool Search Filters
• Crowning Control	• Millimeter / Inch, kN / Ton Selection
• 2 GB Memory	• Stock Counter
• USB flash Memory Drive	• Alphanumeric Memory Drive

## DA - 66T

DELEM



• Graphic Touch Screen Programming Mode	• Real Scale Product Programming and Display
• Graphic Touch Screen Programming Mode	• Automatic Bending Sequence Calculation
• 17" high-resolution color TFT display	• Programmable Material Properties
• Fully Equipped Windows or Linux App	• Product and Tool Search Filters
• Standard Profile-LITE Offline Software	• Millimeter / Inch, kN / Ton Selection
• 2 GB Memory	• Stock Counter
• Product and Tool Memory 256 MB	• USB flash memory support
• Alphanumeric Product Naming	• Emergency Stop Button
• Graphical Product and Tool Selection	

## DA - 53T

DELEM



• Maximum 4 Axis	• Real Scale Product Programming and Display
• 2D Graphic Touch Screen Programming Mode	• Automatic Bending Sequence Calculation
• 13" high-resolution color TFT display	• Programmable Material Properties
• Bending Sequence Calculation	• Product and Tool Search Filters
• Crowning Control	• Millimeter / Inch, kN / Ton Selection
• 2 GB Memory	• Stock Counter
• USB flash Memory Drive	• Alphanumeric Memory Drive

## VISITOUCH 19 MX

CYBELEC



• Maximum 4 Axis	• Real Scale Product Programming and Display
• 3D Graphic Touch Screen Programming Mode	• Automatic Bending Sequence Calculation
• 19" high-resolution color TFT display	• Programmable Material Properties
• DXF / DWG Mold Import	• Product and Tool Search Filters
• Crowning Control	• Millimeter / Inch, kN / Ton Selection
• Windows 10 LTE Operating System	• Stock Counter
• USB flash Memory Drive	• Alphanumeric Memory Drive

## VISITOUCH 19

CYBELEC



• Maximum 4 Axis	• Real Scale Product Programming and Display
• 3D Graphic Touch Screen Programming Mode (O)	• Automatic Bending Sequence Calculation
• 19" high-resolution color TFT display	• Programmable Material Properties
• DXF / DWG Kalıp Import Etme (O)	• Product and Tool Search Filters
• Crowning Control	• Millimeter / Inch, kN / Ton Selection
• Windows 10 LTE Operating System	• Stock Counter
• USB flash Memory Drive	• Alphanumeric Memory Drive

## CYBTOUCH 15

CYBELEC



• Maximum 4 Axis	• Millimeter / Inch, kN / Ton Selection
• 15" high-resolution color TFT display	• Stock Counter
• Crowning Control	• Automatic Bending Sequence Calculation
• USB flash Memory Drive	• Programmable Material Properties
• Alphanumeric Memory Drive	• Product and Tool Search Filters

## CYBTOUCH 12

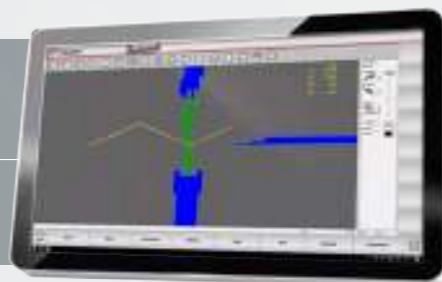
CYBELEC



• Maximum 4 Axis	• Millimeter / Inch, kN / Ton Selection
• 12" high-resolution color TFT display	• Stock Counter
• Crowning Control	• Automatic Bending Sequence Calculation
• USB flash Memory Drive	• Programmable Material Properties
• Alphanumeric Memory Drive	• Product and Tool Search Filters

## S875 W

ESA



• DFX Part and Tool Retrieval (O)	• Full HD Multitouch Resistive Color Screen
• 21" Multi-touch Screen	• Standard 2 Ethernet Ports
• Advanced HDMI and Easy Learning	• 3D Imaging
• Up to 12 Axis Control	• 2D Programming

## S860 W

ESA



• 19" Multi-touch Display	• Up to 12 Axis Control in Combination
• Top and Bottom Mold Holder Management	• 3D CAD/CAM Image and Fingertip Job Design
• Download Files with .Dxf Extension and Tool Library Management (O)	

## S660

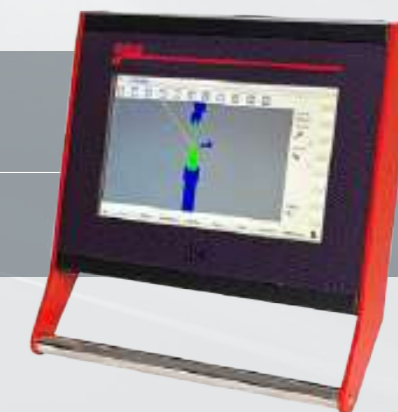
ESA



• 15" High Resolution Touch Screen	• Up to 8 Axis Control in Combination
• No Limits in Flexibility and Performance	• 3D CAD/CAM Image and Fingertip Job Design
• Download Files with .Dxf Extension and Tool Library Management	

## S640

ESA



• 15" High Resolution Touch Screen	• Up to 6 Axis Control in Combination
• No Limits in Flexibility and Performance	• Bevel Correction with Angles
• Automatic bending sequence calculation for preventive compensation	• Material Database Registration

# POWER BEND FALCON

Hydraulic  
Press Brake



1- ... - 6 m length options

Standard 4 axes  
Y1, Y2, X, R

170 - ... - 375 stroke  
387 - ... - 650 daylight options

High speed cycle  
(180 - 10 - 135 mm/s)

40-...- 600 ton capacity options

350 - ... - 510 throat depth

## Stronger, Faster And Deeper Bends...

Power-Bend Falcon Series machines redesigned based on users preferences to become a unique machine with its individual electronic and mechanical features. Power-Bend Falcon Series are among the highest rated machines which will help you increase your productivity and keep costs at minimum level with its user friendly CNC controller and low cost hydraulic maintenance.

New Power-Bend Falcon is exactly what you need for your accurate single, or complicated multiple bend productions.



### MOTORIZED CROWNING SYSTEM

Thanks to the motorized crowning offered as a standard, the deflection balance is made with the motor in the most ideal way, allowing you to obtain more precise bending results.



### FINGER PROTECTION LASER SAFETY

Laser safety units that is produced specially for press brakes and is the leader among safety systems. Laser safe keeps the operator's safety at the top level.

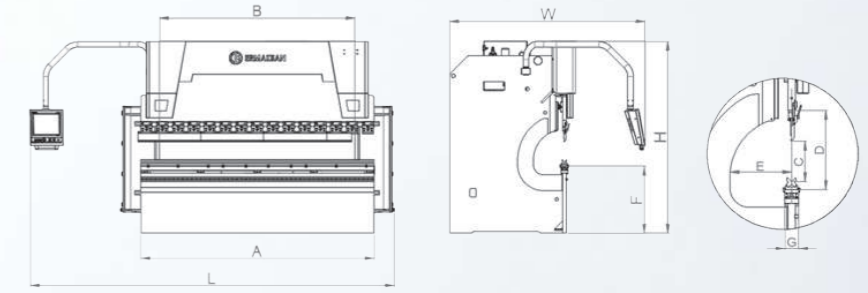
### BACKGAUGE SYSTEM

Power-Bend Falcon offers you 2 Axis (X and R) motorized back gauge system as standard. X and R Axis movements are precise by accurate servo motors mounted on back gauge system.



# POWER BEND FALCON

## TECHNICAL FEATURES

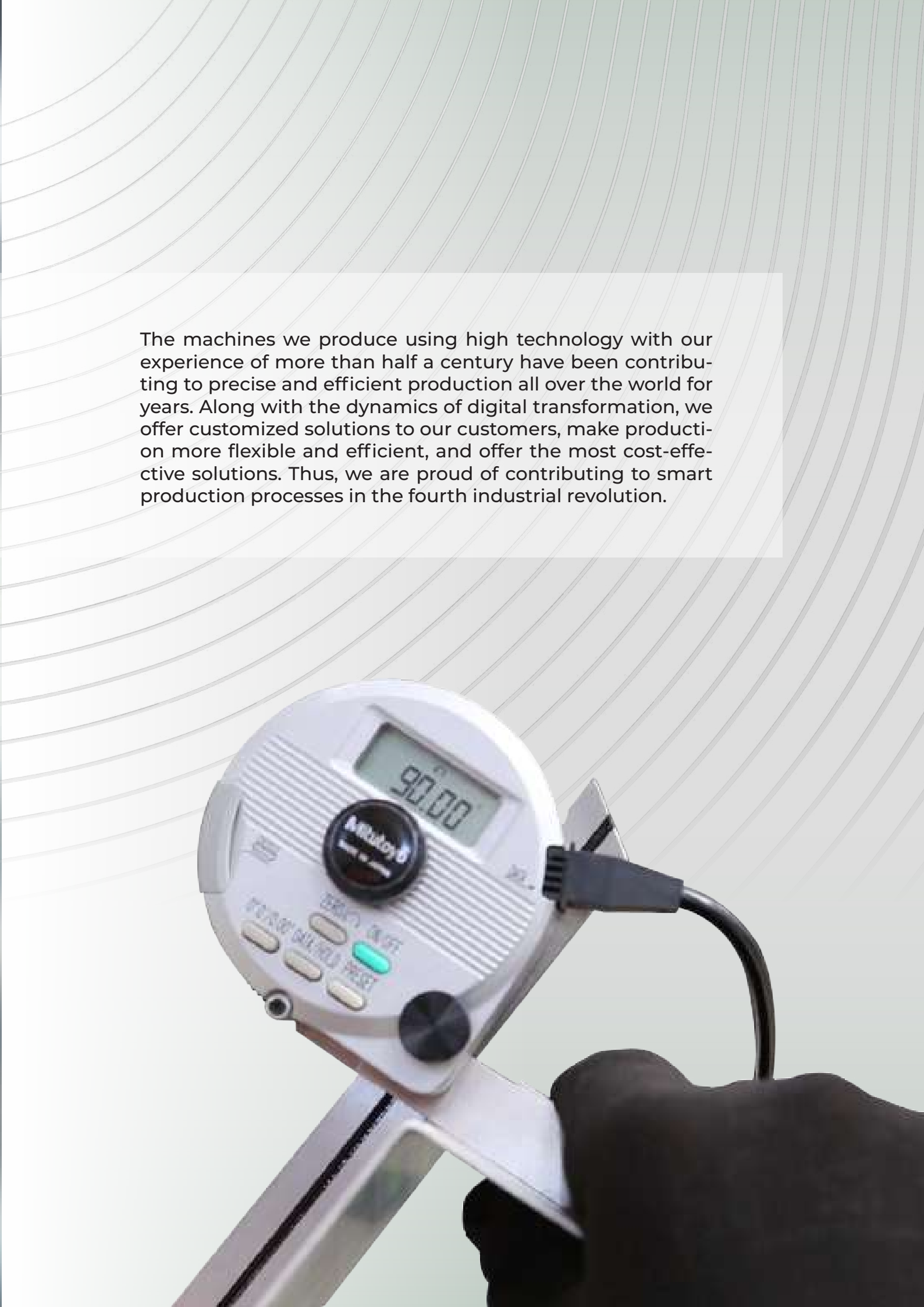


TYPE	BENDING LENGTH	BENDING POWER	DISTANCE BETWEEN COLUMNS	Y RAPID SPEED	Y WORKING SPEED	Y RETURN SPEED	CROWNING	TRAVEL IN X AXIS	SPEED OF X AXIS	TRAVEL OF R AXIS	SPEED OF R AXIS	BACKGAUGE FINGER BLOCKS	NUMBER OF SHEET SUPPORT
PB FALCON 1270-40 (4.17'-44)	1270 (50)	40 (44)	1050 (41.3)	140 (5.51)	10 (0.39)	170 (6.69)	-	500 (19.7)	500 (19.7)	250 (9.8)	350 (13.8)	2	2
PB FALCON 1270-60 (4.17'-66)	1270 (50)	60 (66)	1000 (39.4)	160 (6.30)	10 (0.39)	165 (6.50)	-	500 (19.7)	500 (19.7)	250 (9.8)	350 (13.8)	2	2
PB FALCON 2100-40 (6.89'-44)	2100 (83)	40 (44)	1700 (66.9)	140 (5.51)	10 (0.39)	170 (6.69)	Motorized	500 (19.7)	500 (19.7)	250 (9.8)	350 (13.8)	2	2
PB FALCON 2100-60 (6.89'-66)	2100 (83)	60 (66)	1700 (66.9)	160 (6.30)	10 (0.39)	165 (6.50)	Motorized	500 (19.7)	500 (19.7)	250 (9.8)	350 (13.8)	2	2
PB FALCON 2600-60 (8.53'-66)	2600 (102)	60 (66)	2200 (86.6)	200 (7.87)	10 (0.39)	165 (6.50)	Motorized	500 (19.7)	500 (19.7)	250 (9.8)	350 (13.8)	2	2
PB FALCON 2600-100 (8.53'-110)	2600 (102)	100 (110)	2200 (86.6)	200 (7.87)	9.5 (0.37)	155 (6.10)	Motorized	800 (31.5)	500 (19.7)	250 (9.8)	350 (13.8)	2	2
PB FALCON 2600-135 (8.53'-149)	2600 (102)	135 (149)	2200 (86.6)	160 (6.30)	10 (0.39)	120 (4.72)	Motorized	800 (31.5)	500 (19.7)	250 (9.8)	350 (13.8)	2	2
PB FALCON 3100-100 (10.17'-110)	3100 (122)	100 (110)	2600 (102.4)	200 (7.87)	9.5 (0.37)	155 (6.10)	Motorized	800 (31.5)	500 (19.7)	250 (9.8)	350 (13.8)	2	2
PB FALCON 3100-135 (10.17'-149)	3100 (122)	135 (149)	2600 (102.4)	200 (7.87)	10 (0.39)	120 (4.72)	Motorized	800 (31.5)	500 (19.7)	250 (9.8)	350 (13.8)	2	2
PB FALCON 3100-175 (10.17'-193)	3100 (122)	175 (193)	2600 (102.4)	180 (7.09)	10 (0.39)	135 (5.31)	Motorized	800 (31.5)	500 (19.7)	250 (9.8)	350 (13.8)	2	2
PB FALCON 3100-220 (10.17'-242)	3100 (122)	220 (242)	2600 (102.4)	180 (7.09)	10 (0.39)	160 (6.30)	Motorized	800 (31.5)	500 (19.7)	250 (9.8)	350 (13.8)	2	2
PB FALCON 3100-260 (10.17'-286)	3100 (122)	260 (286)	2600 (102.4)	140 (5.51)	10 (0.39)	135 (5.31)	Motorized	800 (31.5)	500 (19.7)	250 (9.8)	350 (13.8)	2	2
PB FALCON 3100-320 (10.17'-352)	3100 (122)	320 (352)	2600 (102.4)	140 (5.51)	10 (0.39)	150 (5.91)	Motorized	800 (31.5)	500 (19.7)	250 (9.8)	350 (13.8)	2	2
PB FALCON 3100-400 (10.17'-440)	3100 (122)	400 (440)	2550 (100.4)	110 (4.33)	8.4 (0.33)	130 (5.12)	Motorized	800 (31.5)	500 (19.7)	250 (9.8)	350 (13.8)	2	2
PB FALCON 3760-175 (12.34'-193)	3760 (148)	175 (193)	3250 (128.0)	180 (7.09)	10 (0.39)	135 (5.31)	Motorized	800 (31.5)	500 (19.7)	250 (9.8)	350 (13.8)	2	2
PB FALCON 3760-220 (12.34'-242)	3760 (148)	220 (242)	3250 (128.0)	180 (7.09)	10 (0.39)	160 (6.30)	Motorized	800 (31.5)	500 (19.7)	250 (9.8)	350 (13.8)	2	2
PB FALCON 3760-320 (12.34'-352)	3760 (148)	320 (352)	3250 (128.0)	140 (5.51)	10 (0.39)	150 (5.91)	Motorized	800 (31.5)	500 (19.7)	250 (9.8)	350 (13.8)	2	2
PB FALCON 4100-135 (13.45'-149)	4100 (161)	135 (149)	3600 (141.7)	200 (7.87)	10 (0.39)	120 (4.72)	Motorized	800 (31.5)	500 (19.7)	250 (9.8)	350 (13.8)	2	2
PB FALCON 4100-175 (13.45'-193)	4100 (161)	175 (193)	3600 (141.7)	180 (7.09)	10 (0.39)	135 (5.31)	Motorized	800 (31.5)	500 (19.7)	250 (9.8)	350 (13.8)	2	2
PB FALCON 4100-220 (13.45'-242)	4100 (161)	220 (242)	3600 (141.7)	180 (7.09)	10 (0.39)	160 (6.30)	Motorized	800 (31.5)	500 (19.7)	250 (9.8)	350 (13.8)	2	2
PB FALCON 4100-260 (13.45'-286)	4100 (161)	260 (286)	3600 (141.7)	140 (5.51)	10 (0.39)	135 (5.31)	Motorized	800 (31.5)	500 (19.7)	250 (9.8)	350 (13.8)	2	2
PB FALCON 4100-320 (13.45'-352)	4100 (161)	320 (352)	3600 (141.7)	140 (5.51)	10 (0.39)	150 (5.91)	Motorized	800 (31.5)	500 (19.7)	250 (9.8)	350 (13.8)	2	2
PB FALCON 4100-400 (13.45'-440)	4100 (161)	400 (440)	3550 (139.8)	110 (4.33)	8.4 (0.33)	130 (5.12)	Motorized	800 (31.5)	500 (19.7)	250 (9.8)	350 (13.8)	2	2
PB FALCON 4270-135 (14.01'-149)	4270 (168)	135 (149)	3780 (148.8)	200 (7.87)	10 (0.39)	120 (4.72)	Motorized	800 (31.5)	500 (19.7)	250 (9.8)	350 (13.8)	2	2
PB FALCON 4270-175 (14.01'-193)	4270 (168)	175 (193)	3780 (148.8)	180 (7.07)	10 (0.39)	135 (5.31)	Motorized	800 (31.5)	500 (19.7)	250 (9.8)	350 (13.8)	2	2
PB FALCON 4270-220 (14.01'-242)	4270 (168)	220 (242)	3780 (148.8)	180 (7.07)	10 (0.39)	160 (6.30)	Motorized	800 (31.5)	500 (19.7)	250 (9.8)	350 (13.8)	2	2
PB FALCON 4270-400 (14.01'-440)	4270 (168)	400 (440)	3780 (148.8)	110 (4.33)	8.4 (0.33)	130 (5.12)	Motorized	800 (31.5)	500 (19.7)	250 (9.8)	350 (13.8)	2	2
PB FALCON 6100-220 (20.01'-242)	6100 (240)	220 (242)	5100 (200.8)	130 (5.12)	10 (0.39)	125 (4.92)	Motorized	800 (31.5)	500 (19.7)	250 (9.8)	350 (13.8)	4	4
PB FALCON 6100-320 (20.01'-352)	6100 (240)	320 (352)	5100 (200.8)	80 (3.15)	10 (0.39)	75 (2.95)	Motorized	800 (31.5)	500 (19.7)	250 (9.8)	350 (13.8)	4	4
PB FALCON 6100-400 (20.01'-440)	6100 (240)	400 (440)	5100 (200.8)	80 (3.15)	8.4 (0.33)	65 (2.26)	Motorized	800 (31.5)	500 (19.7)	250 (9.8)	350 (13.8)	4	4

OIL CAPACITY	MOTOR POWER	STROKE	DAYLIGHT	THROAT DEPTH	TABLE HEIGHT	TABLE WIDTH	LENGTH	HEIGHT	WIDTH	WEIGHT
80 (21.1)	5.5 (7.4)	170 (6.7)	387 (15.2)	350 (13.8)	850 (33.5)	90 (3.54)	2900 (114.2)	2200 (86.6)	1900 (74.8)	3220 (7100)
150 (39.6)	7.5 (10.1)	275 (10.8)	530 (20.9)	410 (16.1)	900 (35.4)	90 (3.54)	3200 (126.0)	2600 (102.4)	2500 (98.4)	4320 (9526)
80 (21.1)	5.5 (7.4)	170 (6.7)	387 (15.2)	350 (13.8)	850 (33.5)	90 (3.54)	3600 (141.7)	2200 (86.6)	2000 (78.7)	3885 (8566)
150 (39.6)	7.5 (10.1)	275 (10.8)	530 (20.9)	410 (16.1)	900 (35.4)	90 (3.54)	3800 (149.6)	2600 (102.4)	2500 (98.4)	5085 (11212)
150 (39.6)	7.5 (10.1)	275 (10.8)	530 (20.9)	410 (16.1)	900 (35.4)	90 (3.54)	4500 (177.2)	2600 (102.4)	2500 (98.4)	5700 (12569)
150 (39.6)	7.5 (10.1)	275 (10.8)	530 (20.9)	410 (16.1)	900 (35.4)	90 (3.54)	4500 (177.2)	2600 (102.4)	2400 (94.5)	6273 (13832)
200 (52.8)	11 (14.8)	275 (10.8)	550 (21.7)	410 (16.1)	900 (35.4)	90 (3.54)	4300 (169.3)	2800 (110.2)	2600 (102.4)	7673 (16919)
150 (39.6)	7.5 (10.1)	275 (10.8)	530 (20.9)	410 (16.1)	900 (35.4)	90 (3.54)	5000 (196.9)	2600 (102.4)	2400 (94.5)	6786 (14963)
200 (52.8)	11 (14.8)	275 (10.8)	550 (21.7)	410 (16.1)	900 (35.4)	90 (3.54)	4800 (189.0)	2800 (110.2)	2600 (102.4)	8186 (18050)
200 (52.8)	15 (20.1)	275 (10.8)	550 (21.7)	410 (16.1)	900 (35.4)	90 (3.54)	4800 (189.0)	2800 (110.2)	2600 (102.4)	9086 (20035)
300 (79.3)	18.5 (24.8)	275 (10.8)	550 (21.7)	410 (16.1)	900 (35.4)	200 (7.87)	4800 (189.0)	2800 (110.2)	2600 (102.4)	11286 (24886)
300 (79.3)	22 (29.5)	275 (10.8)	550 (21.7)	410 (16.1)	900 (35.4)	220 (8.66)	5000 (196.9)	3100 (122.0)	2600 (102.4)	13886 (30619)
400 (105.7)	30 (40.2)	375 (14.8)	650 (25.6)	410 (16.1)	900 (35.4)	240 (9.45)	5150 (202.8)	3400 (133.9)	2650 (104.3)	17082 (37666)
400 (105.7)	30 (40.2)	375 (14.8)	650 (25.6)	510 (20.1)	1000 (39.4)	240 (9.45)	5000 (196.9)	3600 (141.7)	2800 (110.2)	20910 (46107)
200 (52.8)	15 (20.1)	275 (10.8)	550 (21.7)	410 (16.1)	900 (35.4)	90 (3.54)	5500 (216.5)	2800 (110.2)	2600 (102.4)	10106 (22284)
300 (79.3)	18.5 (24.8)	275 (10.8)	550 (21.7)	410 (16.1)	900 (35.4)	160 (6.30)	5400 (212.6)	2800 (110.2)	2600 (102.4)	12906 (28458)
400 (105.7)	30 (40.2)	375 (14.8)	650 (25.6)	410 (16.1)	900 (35.4)	220 (8.66)	5800 (228.3)	3400 (133.9)	2650 (104.3)	20302 (44766)
200 (52.8)	11 (14.8)	275 (10.8)	550 (21.7)	410 (16.1)	900 (35.4)	90 (3.54)	5800 (228.3)	2800 (110.2)	2600 (102.4)	10964 (24176)
200 (52.8)	15 (20.1)	275 (10.8)	550 (21.7)	410 (16.1)	900 (35.4)	90 (3.54)	5800 (228.3)	2800 (110.2)	2600 (102.4)	11414 (25168)
300 (79.3)	18.5 (24.8)	275 (10.8)	550 (21.7)	410 (16.1)	900 (35.4)	160 (6.30)	5800 (228.3)	2900 (114.2)	2600 (102.4)	13414 (29578)
300 (79.3)	22 (29.5)	275 (10.8)	550 (21.7)	410 (16.1)	900 (35.4)	200 (7.87)	5900 (232.3)	3100 (122.0)	2600 (102.4)	17014 (37516)
400 (105.7)	30 (40.2)	375 (14.8)	650 (25.6)	410 (16.1)	900 (35.4)	220 (8.66)	6150 (242.1)	3400 (133.9)	2650 (104.3)	22064 (48651)
400 (105.7)	30 (40.2)	375 (14.8)	650 (25.6)	510 (20.1)	1000 (39.4)	240 (9.45)	6000 (236.2)	3600 (141.7)	2900 (114.2)	26409 (58232)
200 (52.8)	11 (14.8)	275 (10.8)	550 (21.7)	410 (16.1)	900 (35.4)	90 (3.54)	6000 (236.2)	2800 (110.2)	2600 (102.4)	11269 (24848)
200 (52.8)	15 (20.1)	275 (10.8)	550 (21.7)	410 (16.1)	900 (35.4)	90 (3.54)	6000 (236.2)	2800 (110.2)	2600 (102.4)	12550 (27673)
300 (79.3)	18.5 (24.8)	275 (10.8)	550 (21.7)	410 (16.1)	900 (35.4)	160 (6.30)	6000 (236.2)	2900 (114.2)	2600 (102.4)	14919 (32896)
400 (105.7)	30 (40.2)	375 (14.8)	650 (25.6)	510 (20.1)	1000 (39.4)	240 (9.45)	6100 (240.2)	3600 (141.7)	2900 (114.2)	26631 (58721)
300 (79.3)	18.5 (24.8)	275 (10.8)	550 (21.7)	410 (16.1)	1100 (43.3)	180 (7.09)	7500 (295.3)	3500 (137.8)	2600 (102.4)	24828 (54746)
400 (105.7)	30 (40.2)	375 (14.8)	650 (25.6)	410 (16.1)	1100 (43.3)	180 (7.09)	7900 (311.0)	3900 (153.5)	2650 (104.3)	30928 (68196)
400 (105.7)	30 (40.2)	375 (14.8)	650 (25.6)	510 (20.1)	1100 (43.3)	200 (7.87)	7500 (295.3)	4000 (157.5)	2900 (114.2)	39700 (87539)



**"We know your  
sensitivity"**



The machines we produce using high technology with our experience of more than half a century have been contributing to precise and efficient production all over the world for years. Along with the dynamics of digital transformation, we offer customized solutions to our customers, make production more flexible and efficient, and offer the most cost-effective solutions. Thus, we are proud of contributing to smart production processes in the fourth industrial revolution.



"We are with you in your digital transformation journey"

**ALL INTEGRATED**

Integrate your machine data with your MES and ERP applications.

**ALL THE DATA**

Record your machine historic performance data. Track your machine Job and Operator performance.

**ALL THE MACHINES**

Enable all your production line to be monitored. Retrofit you existing machines to our Industry 4.0 platform.

**ANY WHERE**

Monitor and track machine performance over the flexible easy to use WEB interface from any where

**ANY TIME**

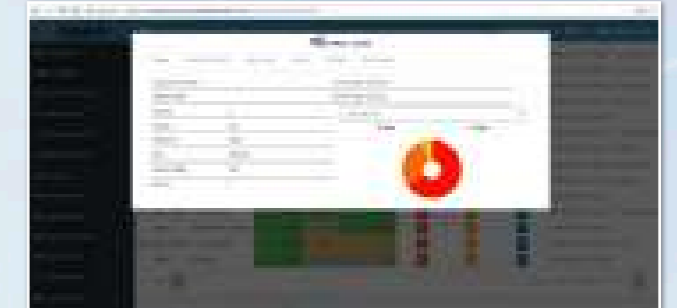
Reach your machine performance data any time you like.

**EFFICIENCY GRAPH OF THE MACHINE FOR THE LAST WEEK**



Generates a trend graph by compiling the operational information of the machine. Operation performance for the previous week may be monitored.

**DETAILED INFORMATION OF THE LAST WORK COMPLETED**



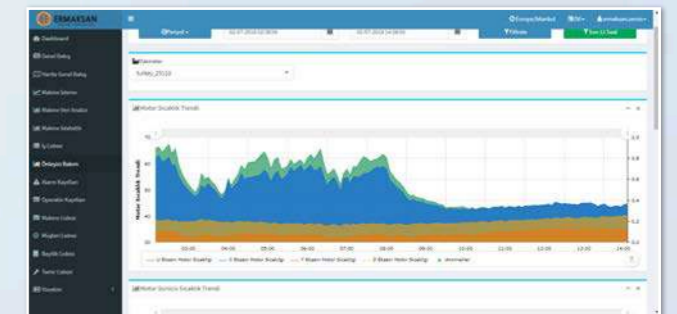
Indicates all the details of the work done, and information such as how long it did take the operator to complete which work and in what way.

**OEE VALUES OF THE MACHINE**



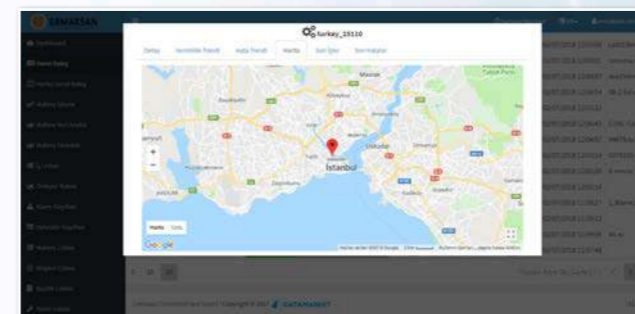
Collects all the information during the stand-by, production and preparation processes to generate a general productivity chart.

**EQUIPMENT DATA**



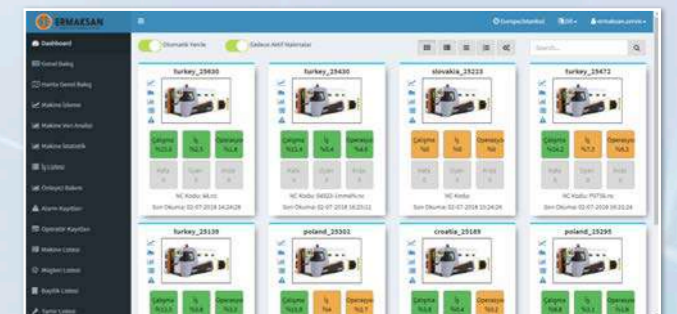
It shows the instantaneous data of the operational elements of the machines as trend graph.

**MACHINE MONITORING SCREEN**



You may monitor your machines in different fields from a single screen.

**STATUS OF THE MACHINES**



This provides the lists of the operational and non-operational machines on the field and the summary of their operation.

# HEAVY DUTY

## Hydraulic Press Brake



## The Right Choice for High Tonnage Bends

High tonnage press brakes, designed and produced under the brand of Ermaksan, are manufactured in different sizes and tonnages to serve the different needs of the customer. High Tonnage Press Brakes allow you to work at full capacity and eliminate time losses of your business. High tonnage press brakes, which provide high performance in the harshest conditions with their durability, allow use in the most efficient way in your tough bending operations. Ermaksan's special press brakes are used in a wide range of industries such as heavy machinery industry, transportation, shipbuilding, wind turbines, power plants, aviation and defence industry, lighting pole production all over the world.

With tandem press brakes, you can make your bends in full length or you can meet your bending needs with its flexible structure that allows you to bend your short-length materials by using them separately. Thus, by eliminating your losses in terms of work and time, you will ensure that your production capacity remains at a high level.



### FULLY AUTOMATED SOLUTIONS

The sheet metal is automatically taken into the bending process and is automatically removed after bending. In addition, CNC-controlled special pneumatic sheet waving and thickness measurement processes are performed with a fully automated vacuum lifting system.

### ADVANCED ENGINEERING STUDIES

With our experience of more than half a century and our strong engineer staff, we determine the machine you need and technical requirements with scientific methods and offer the most appropriate solution to you.

### TANDEM / TRIDEM SOLUTIONS

With Tandem / Tridem solutions that provide flexibility in production, you can make your bends in full length or you can twist your short length materials by using them separately.

"We produce the most suitable solutions for your needs with our advanced engineering approaches"



## CONSULTANCY

With our competent and friendly staff, we provide guidance to our customers in their journey from pre-sales to after-sales, from proposing the right solution to using the offered solution effectively and efficiently. Your business needs, solutions that will meet the highest efficiency with the most appropriate budget are determined with the advanced engineering studies on the customized machinery and equipment. We will present you an offer after the most suitable model for you is determined.

Promising to offer you the most suitable solutions before sales, Ermaksan also promises to provide you the highest quality support service in sales, installation, training, and after-sales processes.



ALL CATALOGS



ermaksanTV

ermaksanmachine

ermaksanmachine

ermaksanmachine

ermaksanmachine



**ERMAKSAN**  
INNOVATIVE TECHNOLOGIES

Işıktepe OSB Mah. Lacivert Cad. No:8 16065 Nilüfer | Bursa | Türkiye  
T: +90 224 294 75 00 F: +90 224 294 75 44  
ermaksan.com.tr / sales@ermaksan.com.tr



**ERMAKUSA**  
INNOVATIVE TECHNOLOGIES

2860 River Road, Suite:145, 60018 Des Plaines, Illinois  
T: +1 630-512-7604 ermakusa.com / info@ermakusa.com

**ERMAK Deutschland GmbH**  
Innovative Technologien

Ridderstrasse 52 48683 Ahaus T: +49 2561 - 86 00 400  
ermakdeutschland.de / info@ermakdeutschland.de